

## Product datasheet for **TA812196M**

### Cellular Apoptosis Susceptibility (CSE1L) Mouse Monoclonal Antibody [Clone ID: OTI5H9]

#### Product data:

Product Type:	Primary Antibodies
Clone Name:	OTI5H9
Applications:	WB
Recommended Dilution:	WB 1:2000
Reactivity:	Human, Mouse, Rat
Host:	Mouse
Isotype:	IgG2b
Clonality:	Monoclonal
Immunogen:	Human recombinant protein fragment corresponding to amino acids 1-300 of human CSE1L (NP_001307) produced in E.coli.
Formulation:	PBS (pH 7.3) containing 1% BSA, 50% glycerol and 0.02% sodium azide.
Concentration:	1 mg/ml
Purification:	Purified from mouse ascites fluids or tissue culture supernatant by affinity chromatography (protein A/G)
Conjugation:	Unconjugated
Storage:	Store at -20°C as received.
Stability:	Stable for 12 months from date of receipt.
Predicted Protein Size:	110.2 kDa
Gene Name:	chromosome segregation 1 like
Database Link:	<a href="#">NP_001307</a> <a href="#">Entrez Gene 110750 Mouse</a> <a href="#">Entrez Gene 362273 Rat</a> <a href="#">Entrez Gene 1434 Human</a> <a href="#">P55060</a>



[View online »](#)

**Background:**

Proteins that carry a nuclear localization signal (NLS) are transported into the nucleus by the importin-alpha/beta heterodimer. Importin-alpha binds the NLS, while importin-beta mediates translocation through the nuclear pore complex. After translocation, RanGTP binds importin-beta and displaces importin-alpha. Importin-alpha must then be returned to the cytoplasm, leaving the NLS protein behind. The protein encoded by this gene binds strongly to NLS-free importin-alpha, and this binding is released in the cytoplasm by the combined action of RANBP1 and RANGAP1. In addition, the encoded protein may play a role both in apoptosis and in cell proliferation. Alternatively spliced transcript variants have been found for this gene. [provided by RefSeq, Jan 2012]

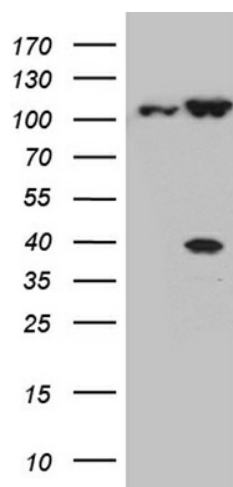
**Synonyms:**

CAS; CSE1; XPO2

**Protein Families:**

Druggable Genome

**Product images:**



HEK293T cells were transfected with the pCMV6-ENTRY control (Left lane) or pCMV6-ENTRY CSE1L ([RC211478], Right lane) cDNA for 48 hrs and lysed. Equivalent amounts of cell lysates (5 ug per lane) were separated by SDS-PAGE and immunoblotted with anti-CSE1L. Positive lysates [LY420011] (100ug) and [LC420011] (20ug) can be purchased separately from OriGene.