

Product datasheet for **TA812195BM**

Cellular Apoptosis Susceptibility (CSE1L) Mouse Monoclonal Antibody (HRP conjugated) [Clone ID: OTI4G1]

Product data:

Product Type:	Primary Antibodies
Clone Name:	OTI4G1
Applications:	IHC, WB
Recommended Dilution:	WB 1:500, IHC 1:2000
Reactivity:	Human, Mouse, Rat
Host:	Mouse
Isotype:	IgG1
Clonality:	Monoclonal
Immunogen:	Human recombinant protein fragment corresponding to amino acids 1-300 of human CSE1L (NP_001307) produced in E.coli.
Formulation:	PBS (pH 7.3) containing 1% BSA, 50% glycerol.
Concentration:	0.5 mg/ml
Purification:	Purified from mouse ascites fluids or tissue culture supernatant by affinity chromatography (protein A/G)
Conjugation:	HRP
Storage:	Store at -20°C as received.
Stability:	Stable for 12 months from date of receipt.
Predicted Protein Size:	110.2 kDa
Gene Name:	chromosome segregation 1 like
Database Link:	NP_001307 Entrez Gene 110750 Mouse Entrez Gene 362273 Rat Entrez Gene 1434 Human P55060



[View online »](#)

Background:

Proteins that carry a nuclear localization signal (NLS) are transported into the nucleus by the importin-alpha/beta heterodimer. Importin-alpha binds the NLS, while importin-beta mediates translocation through the nuclear pore complex. After translocation, RanGTP binds importin-beta and displaces importin-alpha. Importin-alpha must then be returned to the cytoplasm, leaving the NLS protein behind. The protein encoded by this gene binds strongly to NLS-free importin-alpha, and this binding is released in the cytoplasm by the combined action of RANBP1 and RANGAP1. In addition, the encoded protein may play a role both in apoptosis and in cell proliferation. Alternatively spliced transcript variants have been found for this gene. [provided by RefSeq, Jan 2012]

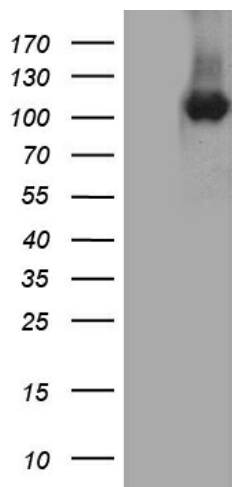
Synonyms:

CAS; CSE1; XPO2

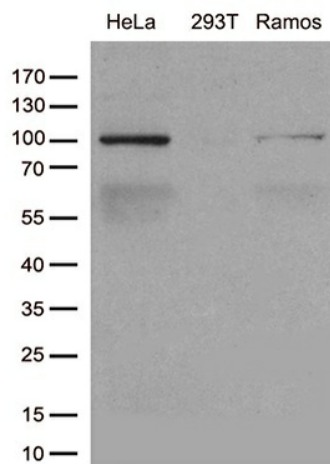
Protein Families:

Druggable Genome

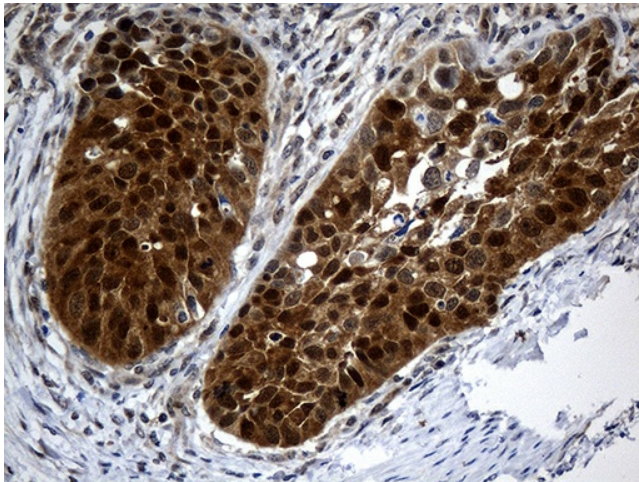
Product images:



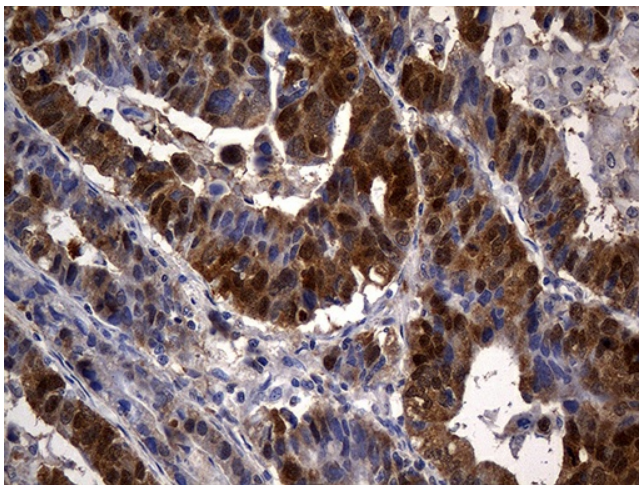
HEK293T cells were transfected with the pCMV6-ENTRY control (Cat# [PS100001], Left lane) or pCMV6-ENTRY CSE1L (Cat# [RC211478], Right lane) cDNA for 48 hrs and lysed. Equivalent amounts of cell lysates (5 ug per lane) were separated by SDS-PAGE and immunoblotted with anti-CSE1L(Cat# [TA812195]). Positive lysates [LY420011] (100ug) and [LC420011] (20ug) can be purchased separately from OriGene.



Western blot analysis of extracts (35ug) from cell lines by using anti-CSE1L monoclonal antibody (1:500).



Immunohistochemical staining of paraffin-embedded Carcinoma of Human kidney tissue using anti-CSE1L mouse monoclonal antibody. (Heat-induced epitope retrieval by 1mM EDTA in 10mM Tris buffer (pH8.5) at 120°C for 3min, [TA812195]) (1:2000)



Immunohistochemical staining of paraffin-embedded Human Gastric Carcinoma using anti-CSE1L mouse monoclonal antibody. (Heat-induced epitope retrieval by 1mM EDTA in 10mM Tris buffer (pH8.5) at 120°C for 3min, [TA812195]) (1:2000)