

Product datasheet for **TA812190S**

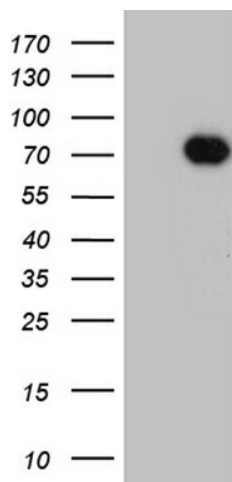
NUMBL Mouse Monoclonal Antibody [Clone ID: OTI6H7]

Product data:

Product Type:	Primary Antibodies
Clone Name:	OTI6H7
Applications:	WB
Recommended Dilution:	WB 1:2000
Reactivity:	Human, Mouse, Rat
Host:	Mouse
Isotype:	IgG1
Clonality:	Monoclonal
Immunogen:	Human recombinant protein fragment corresponding to amino acids 1-225 of human NUMBL (NP_004747) produced in E.coli.
Formulation:	PBS (pH 7.3) containing 1% BSA, 50% glycerol and 0.02% sodium azide.
Concentration:	1 mg/ml
Purification:	Purified from mouse ascites fluids or tissue culture supernatant by affinity chromatography (protein A/G)
Conjugation:	Unconjugated
Storage:	Store at -20°C as received.
Stability:	Stable for 12 months from date of receipt.
Predicted Protein Size:	64.7 kDa
Gene Name:	NUMB like, endocytic adaptor protein
Database Link:	NP_004747 Entrez Gene 18223 Mouse Entrez Gene 292732 Rat Entrez Gene 9253 Human Q9Y6R0
Synonyms:	CAG3A; CTG3a; NBL; NUMB-R; NUMBLIKE; NUMBR; TNRC23
Protein Pathways:	Notch signaling pathway



[View online »](#)

Product images:

HEK293T cells were transfected with the pCMV6-ENTRY control (Left lane) or pCMV6-ENTRY NUMBL ([RC216869], Right lane) cDNA for 48 hrs and lysed. Equivalent amounts of cell lysates (5 ug per lane) were separated by SDS-PAGE and immunoblotted with anti-NUMBL. Positive lysates [LY417769] (100ug) and [LC417769] (20ug) can be purchased separately from OriGene.