

## Product datasheet for TA812189M

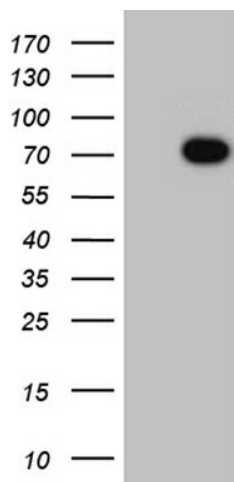
### NUMBL Mouse Monoclonal Antibody [Clone ID: OTI4A1]

#### Product data:

Product Type:	Primary Antibodies
Clone Name:	OTI4A1
Applications:	WB
Recommended Dilution:	WB 1:2000
Reactivity:	Human, Mouse, Rat
Host:	Mouse
Isotype:	IgG1
Clonality:	Monoclonal
Immunogen:	Human recombinant protein fragment corresponding to amino acids 1-225 of human NUMBL (NP_004747) produced in E.coli.
Formulation:	PBS (pH 7.3) containing 1% BSA, 50% glycerol and 0.02% sodium azide.
Concentration:	1 mg/ml
Purification:	Purified from mouse ascites fluids or tissue culture supernatant by affinity chromatography (protein A/G)
Conjugation:	Unconjugated
Storage:	Store at -20°C as received.
Stability:	Stable for 12 months from date of receipt.
Predicted Protein Size:	64.7 kDa
Gene Name:	NUMB like, endocytic adaptor protein
Database Link:	<a href="#">NP_004747</a> <a href="#">Entrez Gene 18223 Mouse</a> <a href="#">Entrez Gene 292732 Rat</a> <a href="#">Entrez Gene 9253 Human</a> <a href="#">Q9Y6R0</a>
Synonyms:	CAG3A; CTG3a; NBL; NUMB-R; NUMBLIKE; NUMBR; TNRC23
Protein Pathways:	Notch signaling pathway


[View online »](#)

## Product images:



HEK293T cells were transfected with the pCMV6-ENTRY control (Left lane) or pCMV6-ENTRY NUMBL ([RC216869], Right lane) cDNA for 48 hrs and lysed. Equivalent amounts of cell lysates (5 ug per lane) were separated by SDS-PAGE and immunoblotted with anti-NUMBL. Positive lysates [LY417769] (100ug) and [LC417769] (20ug) can be purchased separately from OriGene.