

## Product datasheet for **TA812185AM**

### Zinc Alpha 2 Glycoprotein (AZGP1) Mouse Monoclonal Antibody (Biotin conjugated) [Clone ID: OTI10F2]

#### Product data:

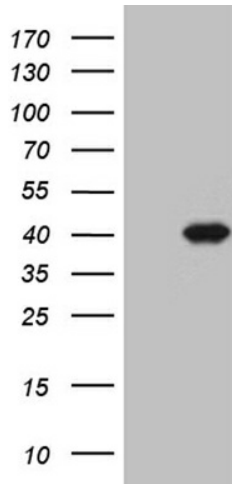
Product Type:	Primary Antibodies
Clone Name:	OTI10F2
Applications:	IHC, WB
Recommended Dilution:	WB 1:500~2000, IHC 1:2000
Reactivity:	Human
Host:	Mouse
Isotype:	IgG1
Clonality:	Monoclonal
Immunogen:	Human recombinant protein fragment corresponding to amino acids 21-298 of human AZGP1 (NP_001176) produced in E.coli.
Formulation:	PBS (pH 7.3) containing 1% BSA, 50% glycerol and 0.02% sodium azide.
Concentration:	0.5 mg/ml
Purification:	Purified from mouse ascites fluids or tissue culture supernatant by affinity chromatography (protein A/G)
Conjugation:	Biotin
Storage:	Store at -20°C as received.
Stability:	Stable for 12 months from date of receipt.
Predicted Protein Size:	34.1 kDa
Gene Name:	alpha-2-glycoprotein 1, zinc-binding
Database Link:	<a href="#">NP_001176</a> <a href="#">Entrez Gene 563 Human</a> <a href="#">P25311</a>
Background:	Stimulates lipid degradation in adipocytes and causes the extensive fat losses associated with some advanced cancers. May bind polyunsaturated fatty acids. [UniProtKB/Swiss-Prot Function]
Synonyms:	ZA2G; ZAG



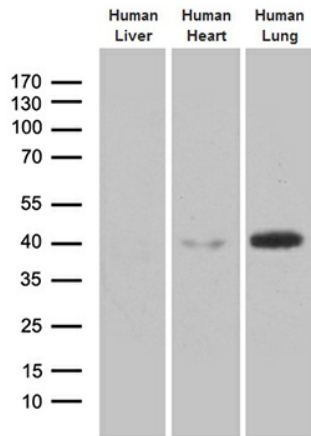
[View online »](#)

Protein Families: Secreted Protein

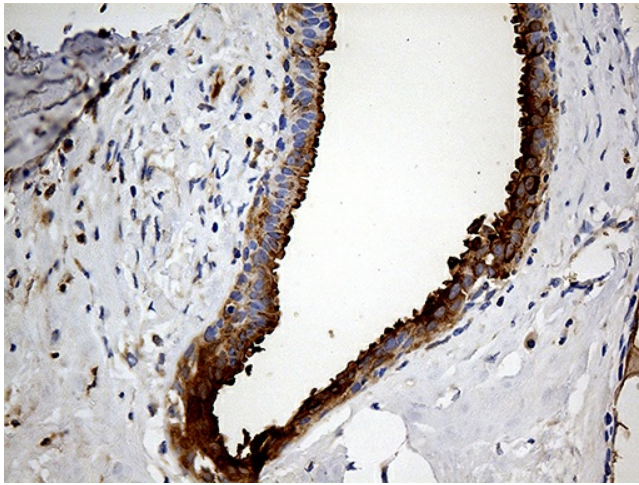
**Product images:**



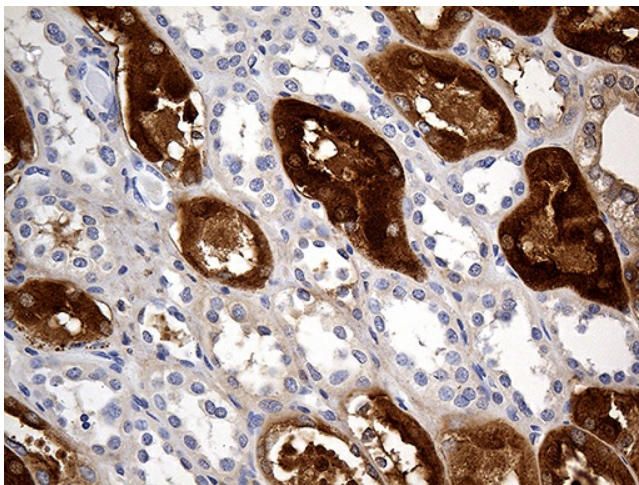
HEK293T cells were transfected with the pCMV6-ENTRY control (Cat# [PS100001], Left lane) or pCMV6-ENTRY AZGP1 (Cat# [RC207625], Right lane) cDNA for 48 hrs and lysed. Equivalent amounts of cell lysates (5 ug per lane) were separated by SDS-PAGE and immunoblotted with anti-AZGP1(Cat# [TA812185]). Positive lysates [LY420084] (100ug) and [LC420084] (20ug) can be purchased separately from OriGene.



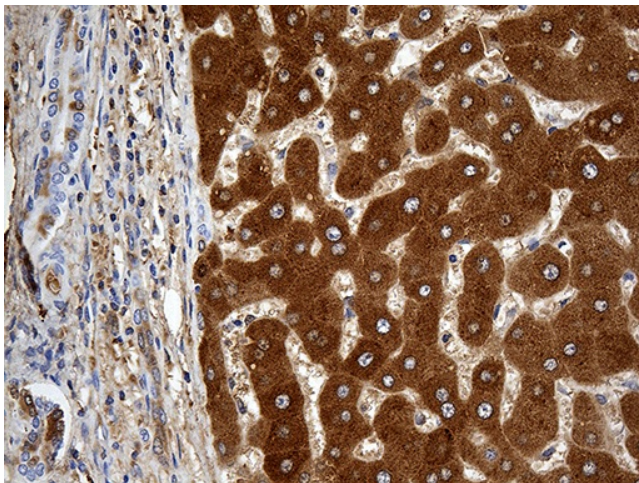
Western blot analysis of extracts (35ug) from 3 tissue lysates by using anti-AZGP1 monoclonal antibody (1:500).



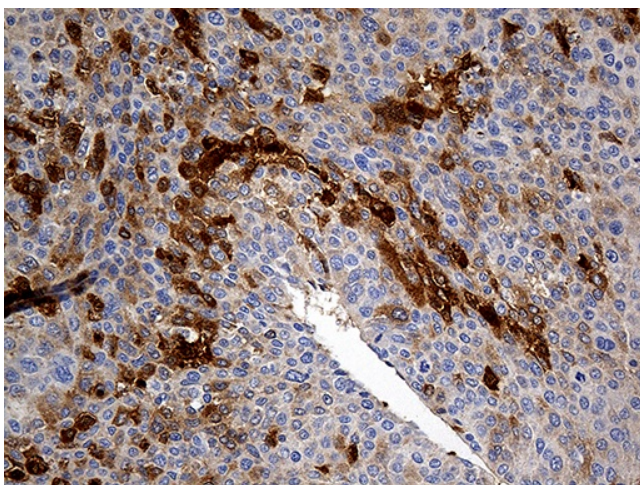
Immunohistochemical staining of paraffin-embedded Human breast tissue within the normal limits using anti-AZGP1 mouse monoclonal antibody. (Heat-induced epitope retrieval by 1mM EDTA in 10mM Tris buffer (pH8.5) at 120°C for 3min, [TA812185]) (1:2000)



Immunohistochemical staining of paraffin-embedded Human Kidney tissue within the normal limits using anti-AZGP1 mouse monoclonal antibody. (Heat-induced epitope retrieval by 1mM EDTA in 10mM Tris buffer (pH8.5) at 120°C for 3min, [TA812185]) (1:2000)



Immunohistochemical staining of paraffin-embedded Human liver tissue within the normal limits using anti-AZGP1 mouse monoclonal antibody. (Heat-induced epitope retrieval by 1mM EDTA in 10mM Tris buffer (pH8.5) at 120°C for 3min, [TA812185]) (1:2000)



Immunohistochemical staining of paraffin-embedded Carcinoma of Human liver tissue using anti-AZGP1 mouse monoclonal antibody. (Heat-induced epitope retrieval by 1mM EDTA in 10mM Tris buffer (pH8.5) at 120°C for 3min, [TA812185]) (1:2000)