

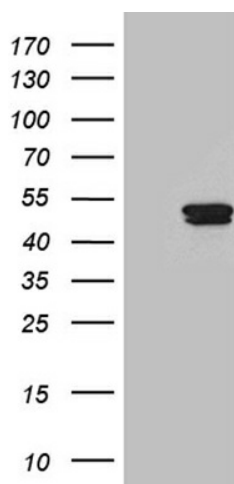
## Product datasheet for TA812182M

### DNAH6 Mouse Monoclonal Antibody [Clone ID: OTI8C8]

#### Product data:

Product Type:	Primary Antibodies
Clone Name:	OTI8C8
Applications:	WB
Recommended Dilution:	WB 1:2000
Reactivity:	Human
Host:	Mouse
Isotype:	IgG1
Clonality:	Monoclonal
Immunogen:	Full length human recombinant protein of human DNHL1 (NP_775916) produced in E.coli.
Formulation:	PBS (pH 7.3) containing 1% BSA, 50% glycerol and 0.02% sodium azide.
Concentration:	1 mg/ml
Purification:	Purified from mouse ascites fluids or tissue culture supernatant by affinity chromatography (protein A/G)
Conjugation:	Unconjugated
Storage:	Store at -20°C as received.
Stability:	Stable for 12 months from date of receipt.
Predicted Protein Size:	46.6 kDa
Gene Name:	dynein axonemal heavy chain 6
Database Link:	<a href="#">NP_775916</a> <a href="#">Entrez Gene 284944</a> <a href="#">Entrez Gene 1768</a> Human <a href="#">Q9C0G6</a>
Synonyms:	FLJ37357


[View online »](#)

**Product images:**


HEK293T cells were transfected with the pCMV6-ENTRY control (Left lane) or pCMV6-ENTRY DNHL1 ([RC211192], Right lane) cDNA for 48 hrs and lysed. Equivalent amounts of cell lysates (5 ug per lane) were separated by SDS-PAGE and immunoblotted with anti-DNHL1. Positive lysates [LY406530] (100ug) and [LC406530] (20ug) can be purchased separately from OriGene.