

## Product datasheet for **TA812180AM**

### **Bone marrow stromal cell antigen 1 (BST1) Mouse Monoclonal Antibody (Biotin conjugated)** **[Clone ID: OTI4E3]**

#### Product data:

|                         |  |
|-------------------------|--|
| Product Type:           | Primary Antibodies   |
| Clone Name:             | OTI4E3   |
| Applications:           | WB   |
| Recommended Dilution:   | WB 1:500   |
| Reactivity:             | Human  |
| Host:                   | Mouse  |
| Isotype:                | IgG1   |
| Clonality:              | Monoclonal   |
| Immunogen:              | Human recombinant protein fragment corresponding to amino acids 29-318 of human BST1 (NP_004325) produced in E.coli. |
| Formulation:            | PBS (pH 7.3) containing 1% BSA, 50% glycerol and 0.02% sodium azide.   |
| Concentration:          | 0.5 mg/ml  |
| Purification:           | Purified from mouse ascites fluids or tissue culture supernatant by affinity chromatography (protein A/G)            |
| Conjugation:            | Biotin   |
| Storage:                | Store at -20°C as received.  |
| Stability:              | Stable for 12 months from date of receipt.   |
| Predicted Protein Size: | 35.5 kDa   |
| Gene Name:              | bone marrow stromal cell antigen 1   |
| Database Link:          | <a href="#">NP_004325</a><br><a href="#">Entrez Gene 683 Human</a><br><a href="#">Q10588</a>                         |



[View online »](#)

**Background:**

Bone marrow stromal cell antigen-1 is a stromal cell line-derived glycosylphosphatidylinositol-anchored molecule that facilitates pre-B-cell growth. The deduced amino acid sequence exhibits 33% similarity with CD38. BST1 expression is enhanced in bone marrow stromal cell lines derived from patients with rheumatoid arthritis. The polyclonal B-cell abnormalities in rheumatoid arthritis may be, at least in part, attributed to BST1 overexpression in the stromal cell population. [provided by RefSeq, Jul 2008]

**Synonyms:**

CD157

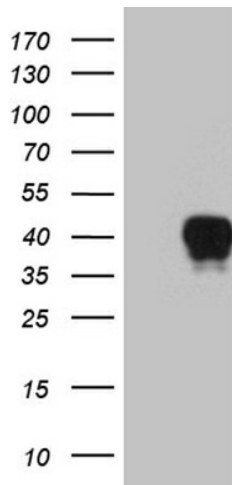
**Protein Families:**

Transmembrane

**Protein Pathways:**

Calcium signaling pathway, Metabolic pathways, Nicotinate and nicotinamide metabolism

**Product images:**



HEK293T cells were transfected with the pCMV6-ENTRY control (Cat# [PS100001], Left lane) or pCMV6-ENTRY BST1 (Cat# [RC204151], Right lane) cDNA for 48 hrs and lysed. Equivalent amounts of cell lysates (5 ug per lane) were separated by SDS-PAGE and immunoblotted with anti-BST1 (Cat# [TA812180]). Positive lysates [LY418052] (100ug) and [LC418052] (20ug) can be purchased separately from OriGene.