

## Product datasheet for **TA812166M**

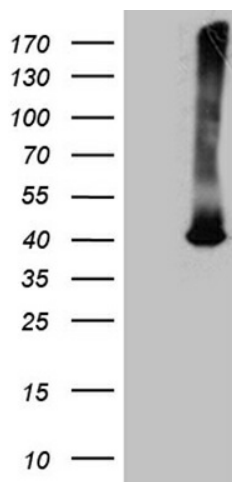
### ATP6V0D2 Mouse Monoclonal Antibody [Clone ID: OTI2D6]

#### Product data:

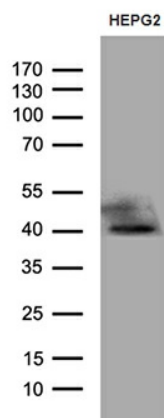
|                         |  |
|-------------------------|--|
| Product Type:           | Primary Antibodies   |
| Clone Name:             | OTI2D6   |
| Applications:           | IHC, WB  |
| Recommended Dilution:   | WB 1:500~2000, IHC 1:2000  |
| Reactivity:             | Human, Mouse, Rat  |
| Host:                   | Mouse  |
| Isotype:                | IgG2b  |
| Clonality:              | Monoclonal   |
| Immunogen:              | Full length human recombinant protein of human ATP6V0D2 (NP_689778) produced in E.coli.  |
| Formulation:            | PBS (pH 7.3) containing 1% BSA, 50% glycerol and 0.02% sodium azide.   |
| Concentration:          | 1 mg/ml  |
| Purification:           | Purified from mouse ascites fluids or tissue culture supernatant by affinity chromatography (protein A/G)                                      |
| Conjugation:            | Unconjugated   |
| Storage:                | Store at -20°C as received.  |
| Stability:              | Stable for 12 months from date of receipt.   |
| Predicted Protein Size: | 40.2 kDa   |
| Gene Name:              | ATPase H <sup>+</sup> transporting V0 subunit d2   |
| Database Link:          | <a href="#">NP_689778</a><br><a href="#">Entrez Gene 245972 Human</a><br><a href="#">Q8N8Y2</a>  |
| Synonyms:               | ATP6D2; VMA6   |
| Protein Pathways:       | Epithelial cell signaling in Helicobacter pylori infection, Lysosome, Metabolic pathways, Oxidative phosphorylation, Vibrio cholerae infection |


[View online »](#)

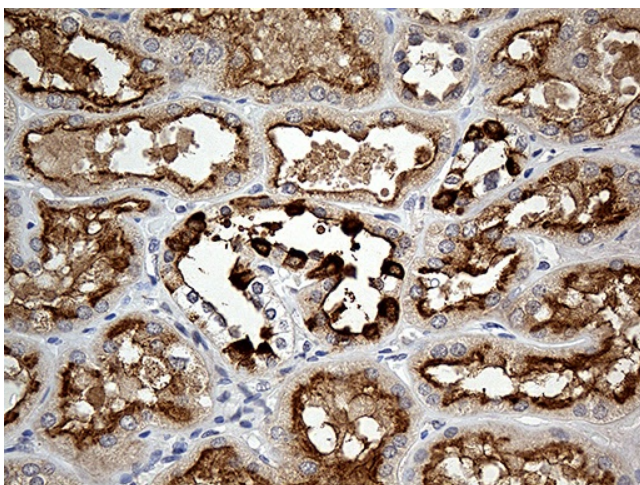
## Product images:



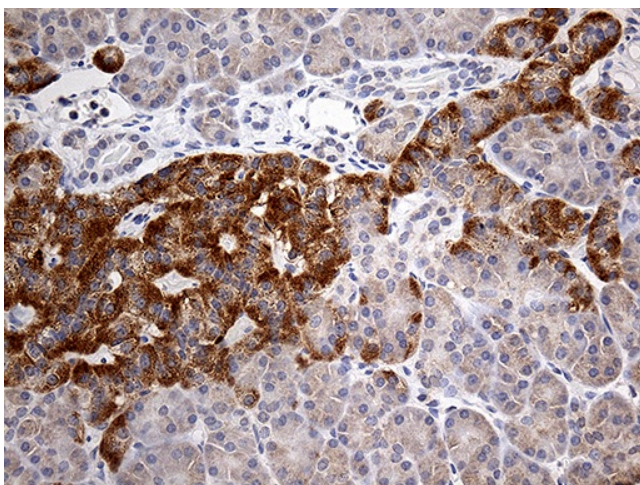
HEK293T cells were transfected with the pCMV6-ENTRY control (Cat# [PS100001], Left lane) or pCMV6-ENTRY ATP6V0D2 (Cat# [RC209007], Right lane) cDNA for 48 hrs and lysed. Equivalent amounts of cell lysates (5 ug per lane) were separated by SDS-PAGE and immunoblotted with anti-ATP6V0D2 antibody (Cat# [TA812166]). Positive lysates [LY403477] (100ug) and [LC403477] (20ug) can be purchased separately from OriGene.



Western blot analysis of extracts (35ug) from HEPG2 cell lines by using anti-ATP6V0D2 monoclonal antibody (1:500).



Immunohistochemical staining of paraffin-embedded Human Kidney tissue within the normal limits using anti-ATP6V0D2 mouse monoclonal antibody. Heat-induced epitope retrieval by EDTA solution buffer pH 8.0 at 120°C for 3 min.



Immunohistochemical staining of paraffin-embedded Human pancreas tissue within the normal limits using anti-ATP6V0D2 mouse monoclonal antibody. Heat-induced epitope retrieval by EDTA solution buffer pH 8.0 at 120°C for 3 min.