

## Product datasheet for **TA812161**

### Collagen III (COL3A1) Mouse Monoclonal Antibody [Clone ID: OTI2G3]

#### Product data:

Product Type:	Primary Antibodies
Clone Name:	OTI2G3
Applications:	WB
Recommended Dilution:	WB 1:500
Reactivity:	Human, Mouse, Rat
Host:	Mouse
Isotype:	IgG1
Clonality:	Monoclonal
Immunogen:	Human recombinant protein fragment corresponding to amino acids 981-1205 of human COL3A1 (NP_000081) produced in E.coli.
Formulation:	PBS (pH 7.3) containing 1% BSA, 50% glycerol and 0.02% sodium azide.
Concentration:	1 mg/ml
Purification:	Purified from mouse ascites fluids or tissue culture supernatant by affinity chromatography (protein A/G)
Conjugation:	Unconjugated
Storage:	Store at -20°C as received.
Stability:	Stable for 12 months from date of receipt.
Predicted Protein Size:	138.56 kDa
Gene Name:	collagen type III alpha 1 chain
Database Link:	<a href="#">NP_000081</a> <a href="#">Entrez Gene 12825 Mouse</a> <a href="#">Entrez Gene 84032 Rat</a> <a href="#">Entrez Gene 1281 Human</a> <a href="#">P02461</a>
Background:	This gene encodes the pro-alpha1 chains of type III collagen, a fibrillar collagen that is found in extensible connective tissues such as skin, lung, uterus, intestine and the vascular system, frequently in association with type I collagen. Mutations in this gene are associated with Ehlers-Danlos syndrome types IV, and with aortic and arterial aneurysms. Two transcripts, resulting from the use of alternate polyadenylation signals, have been identified for this gene. [provided by R. Dalgleish, Feb 2008]



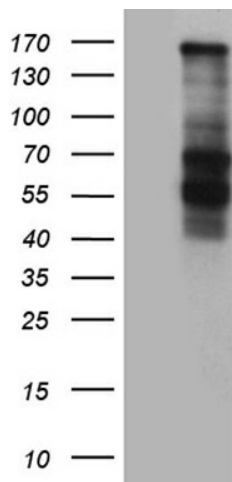
[View online »](#)

Synonyms: EDS4A

Protein Families: Druggable Genome

Protein Pathways: ECM-receptor interaction, Focal adhesion

### Product images:



HEK293T cells were transfected with the pCMV6-ENTRY control (Cat# [PS100001], Left lane) or pCMV6-ENTRY COL3A1 (Cat# [RC211766], Right lane) cDNA for 48 hrs and lysed. Equivalent amounts of cell lysates (5 ug per lane) were separated by SDS-PAGE and immunoblotted with anti-COL3A1 antibody (Cat# TA812161). Positive lysates [LY400026] (100ug) and [LC400026] (20ug) can be purchased separately from OriGene.