

## Product datasheet for **TA812140S**

### **KDM3A / JHDM2A (KDM3A) Mouse Monoclonal Antibody [Clone ID: OTI9F6]**

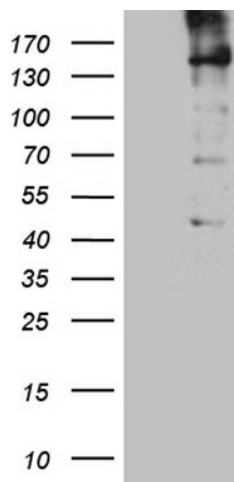
#### **Product data:**

<b>Product Type:</b>	Primary Antibodies
<b>Clone Name:</b>	OTI9F6
<b>Applications:</b>	WB
<b>Recommended Dilution:</b>	WB 1:500
<b>Reactivity:</b>	Human, Mouse, Rat
<b>Host:</b>	Mouse
<b>Isotype:</b>	IgG1
<b>Clonality:</b>	Monoclonal
<b>Immunogen:</b>	Human recombinant protein fragment corresponding to amino acids 850-1321 of human KDM3A (NP_060903) produced in E.coli.
<b>Formulation:</b>	PBS (pH 7.3) containing 1% BSA, 50% glycerol and 0.02% sodium azide.
<b>Concentration:</b>	1 mg/ml
<b>Purification:</b>	Purified from mouse ascites fluids or tissue culture supernatant by affinity chromatography (protein A/G)
<b>Conjugation:</b>	Unconjugated
<b>Storage:</b>	Store at -20°C as received.
<b>Stability:</b>	Stable for 12 months from date of receipt.
<b>Predicted Protein Size:</b>	147.2 kDa
<b>Gene Name:</b>	lysine demethylase 3A
<b>Database Link:</b>	<a href="#">NP_060903</a> <a href="#">Entrez Gene 104263 Mouse</a> <a href="#">Entrez Gene 312440 Rat</a> <a href="#">Entrez Gene 55818 Human</a> <a href="#">Q9Y4C1</a>
<b>Background:</b>	This gene encodes a zinc finger protein that contains a jumonji domain and may play a role in hormone-dependent transcriptional activation. Alternative splicing results in multiple transcript variants. [provided by RefSeq, Apr 2009]
<b>Synonyms:</b>	JHDM2A; JHMD2A; JMJD1; JMJD1A; TSGA

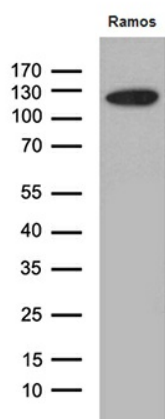


[View online »](#)

**Product images:**



HEK293T cells were transfected with the pCMV6-ENTRY control (Left lane) or pCMV6-ENTRY KDM3A ([RC215874], Right lane) cDNA for 48 hrs and lysed. Equivalent amounts of cell lysates (5 ug per lane) were separated by SDS-PAGE and immunoblotted with anti-KDM3A. Positive lysates [LY402688] (100ug) and [LC402688] (20ug) can be purchased separately from OriGene.



Western blot analysis of extracts (35ug) from Ramos cell line by using anti-KDM3A monoclonal antibody (1:500).