

Product datasheet for **TA812138M**

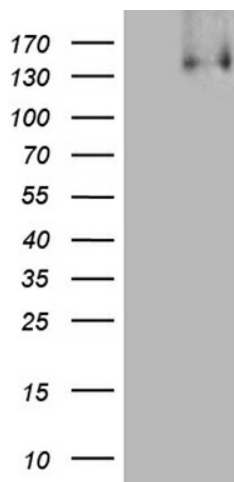
KDM3A / JHDM2A (KDM3A) Mouse Monoclonal Antibody [Clone ID: OTI5A7]

Product data:

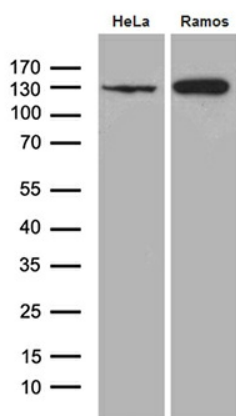
Product Type:	Primary Antibodies
Clone Name:	OTI5A7
Applications:	IHC, WB
Recommended Dilution:	WB 1:500, IHC 1:150
Reactivity:	Human, Mouse, Rat
Host:	Mouse
Isotype:	IgG1
Clonality:	Monoclonal
Immunogen:	Human recombinant protein fragment corresponding to amino acids 850-1321 of human KDM3A (NP_060903) produced in E.coli.
Formulation:	PBS (pH 7.3) containing 1% BSA, 50% glycerol and 0.02% sodium azide.
Concentration:	1 mg/ml
Purification:	Purified from mouse ascites fluids or tissue culture supernatant by affinity chromatography (protein A/G)
Conjugation:	Unconjugated
Storage:	Store at -20°C as received.
Stability:	Stable for 12 months from date of receipt.
Predicted Protein Size:	147.2 kDa
Gene Name:	lysine demethylase 3A
Database Link:	NP_060903 Entrez Gene 104263 Mouse Entrez Gene 312440 Rat Entrez Gene 55818 Human Q9Y4C1
Background:	This gene encodes a zinc finger protein that contains a jumonji domain and may play a role in hormone-dependent transcriptional activation. Alternative splicing results in multiple transcript variants. [provided by RefSeq, Apr 2009]
Synonyms:	JHDM2A; JHMD2A; JMJD1; JMJD1A; TSGA


[View online »](#)

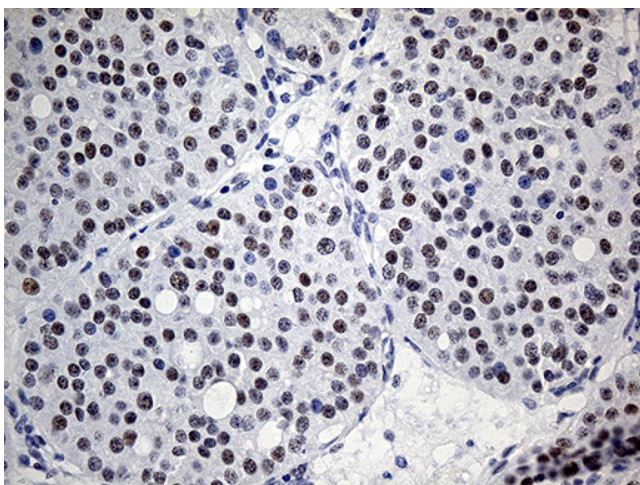
Product images:



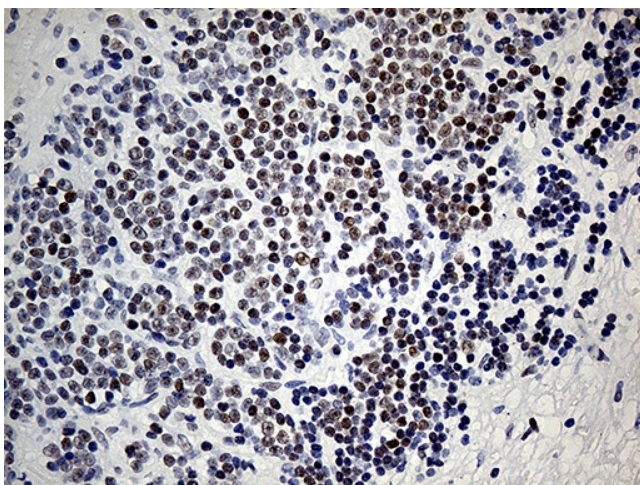
HEK293T cells were transfected with the pCMV6-ENTRY control (Cat# [PS100001], Left lane) or pCMV6-ENTRY KDM3A (Cat# [RC215874], Right lane) cDNA for 48 hrs and lysed. Equivalent amounts of cell lysates (5 ug per lane) were separated by SDS-PAGE and immunoblotted with anti-KDM3A (Cat# [TA812138]). Positive lysates [LY402688] (100ug) and [LC402688] (20ug) can be purchased separately from OriGene.



Western blot analysis of extracts (35ug) from 2 cell lines by using anti-KDM3A monoclonal antibody (1:500).



Immunohistochemical staining of paraffin-embedded Carcinoma of Human pancreas tissue using anti-KDM3A mouse monoclonal antibody. Heat-induced epitope retrieval by EDTA solution buffer pH 8.0 at 120°C for 3 min.



Immunohistochemical staining of paraffin-embedded Human lymphoma tissue using anti-KDM3A mouse monoclonal antibody. Heat-induced epitope retrieval by EDTA solution buffer pH 8.0 at 120°C for 3 min.