

Product datasheet for **TA812137S**

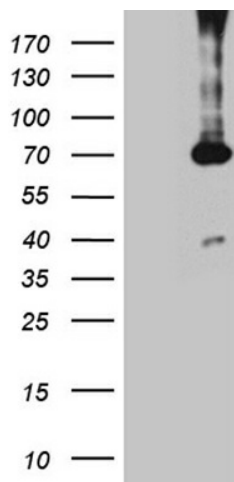
PGM2L1 Mouse Monoclonal Antibody [Clone ID: OTI5F5]

Product data:

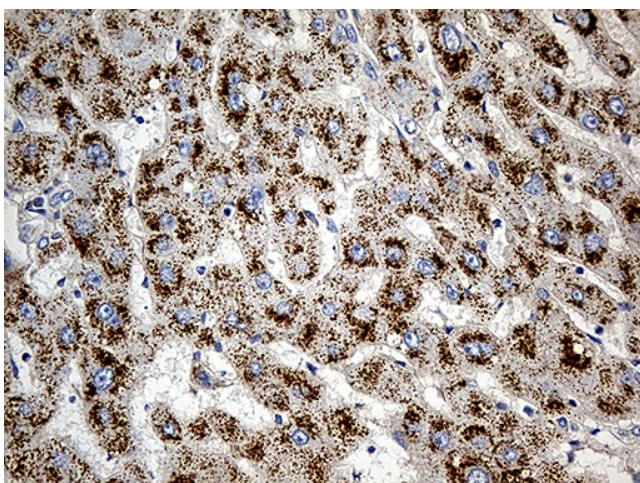
Product Type:	Primary Antibodies
Clone Name:	OTI5F5
Applications:	IHC, WB
Recommended Dilution:	WB 1:2000, IHC 1:500
Reactivity:	Human, Mouse, Rat
Host:	Mouse
Isotype:	IgG2b
Clonality:	Monoclonal
Immunogen:	Full length human recombinant protein of human PGM2L1 (NP_775853) produced in HEK293T cell.
Formulation:	PBS (pH 7.3) containing 1% BSA, 50% glycerol and 0.02% sodium azide.
Concentration:	1 mg/ml
Purification:	Purified from mouse ascites fluids or tissue culture supernatant by affinity chromatography (protein A/G)
Conjugation:	Unconjugated
Storage:	Store at -20°C as received.
Stability:	Stable for 12 months from date of receipt.
Predicted Protein Size:	70.3 kDa
Gene Name:	phosphoglucomutase 2-like 1
Database Link:	NP_775853 Entrez Gene 70974 Mouse Entrez Gene 685076 Rat Entrez Gene 283209 Human Q6PCE3
Synonyms:	BM32A; PMMLP
Protein Pathways:	Starch and sucrose metabolism



[View online »](#)

Product images:

HEK293T cells were transfected with the pCMV6-ENTRY control (Cat# [PS100001], Left lane) or pCMV6-ENTRY PGM2L1 (Cat# [RC209168], Right lane) cDNA for 48 hrs and lysed. Equivalent amounts of cell lysates (5 ug per lane) were separated by SDS-PAGE and immunoblotted with anti-PGM2L1 antibody (Cat# [TA812137]). Positive lysates [LY406489] (100ug) and [LC406489] (20ug) can be purchased separately from OriGene.



Immunohistochemical staining of paraffin-embedded Human liver tissue within the normal limits using anti-PGM2L1 mouse monoclonal antibody. (Heat-induced epitope retrieval by 1mM EDTA in 10mM Tris buffer (pH8.5) at 120°C for 3min, [TA812137]) (1:500)