

## Product datasheet for TA812135M

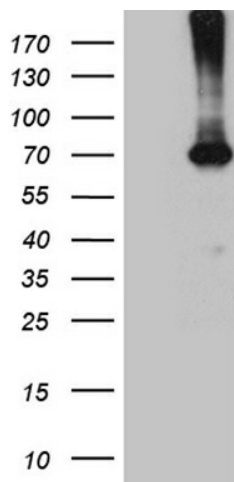
### PGM2L1 Mouse Monoclonal Antibody [Clone ID: OTI2D12]

#### Product data:

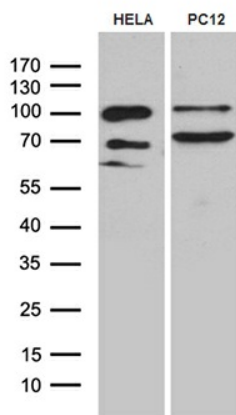
Product Type:	Primary Antibodies
Clone Name:	OTI2D12
Applications:	WB
Recommended Dilution:	WB 1:500~2000
Reactivity:	Human, Rat, Mouse
Host:	Mouse
Isotype:	IgG1
Clonality:	Monoclonal
Immunogen:	Full length human recombinant protein of human PGM2L1 (NP_775853) produced in HEK293T cell.
Formulation:	PBS (pH 7.3) containing 1% BSA, 50% glycerol and 0.02% sodium azide.
Concentration:	1 mg/ml
Purification:	Purified from mouse ascites fluids or tissue culture supernatant by affinity chromatography (protein A/G)
Conjugation:	Unconjugated
Storage:	Store at -20°C as received.
Stability:	Stable for 12 months from date of receipt.
Predicted Protein Size:	70.3 kDa
Gene Name:	phosphoglucomutase 2-like 1
Database Link:	<a href="#">NP_775853</a> <a href="#">Entrez Gene 70974 Mouse</a> <a href="#">Entrez Gene 685076 Rat</a> <a href="#">Entrez Gene 283209 Human</a> <a href="#">Q6PCE3</a>
Synonyms:	BM32A; PMMLP
Protein Pathways:	Starch and sucrose metabolism


[View online »](#)

## Product images:



HEK293T cells were transfected with the pCMV6-ENTRY control (Left lane) or pCMV6-ENTRY PGM2L1 ([RC209168], Right lane) cDNA for 48 hrs and lysed. Equivalent amounts of cell lysates (5 ug per lane) were separated by SDS-PAGE and immunoblotted with anti-PGM2L. Positive lysates [LY406489] (100ug) and [LC406489] (20ug) can be purchased separately from OriGene.



Western blot analysis of extracts (35ug) from 2 cell lines by using anti-PGM2L1 monoclonal antibody (1:500).