

Product datasheet for **TA812132AM**

Optineurin (OPTN) Mouse Monoclonal Antibody (Biotin conjugated) [Clone ID: OTI7H2]

Product data:

Product Type:	Primary Antibodies
Clone Name:	OTI7H2
Applications:	IHC, WB
Recommended Dilution:	WB 1:2000, IHC 1:500
Reactivity:	Human
Host:	Mouse
Isotype:	IgG1
Clonality:	Monoclonal
Immunogen:	Full length human recombinant protein of human OPTN (NP_001008212) produced in HEK293T cell.
Formulation:	PBS (pH 7.3) containing 1% BSA, 50% glycerol and 0.02% sodium azide.
Concentration:	0.5 mg/ml
Purification:	Purified from mouse ascites fluids or tissue culture supernatant by affinity chromatography (protein A/G)
Conjugation:	Biotin
Storage:	Store at -20°C as received.
Stability:	Stable for 12 months from date of receipt.
Predicted Protein Size:	65.7 kDa
Gene Name:	optineurin
Database Link:	NP_001008212 Entrez Gene 10133 Human Q96CV9



[View online »](#)

Background:

This gene encodes the coiled-coil containing protein optineurin. Optineurin may play a role in normal-tension glaucoma and adult-onset primary open angle glaucoma. Optineurin interacts with adenovirus E3-14.7K protein and may utilize tumor necrosis factor-alpha or Fas-ligand pathways to mediate apoptosis, inflammation or vasoconstriction. Optineurin may also function in cellular morphogenesis and membrane trafficking, vesicle trafficking, and transcription activation through its interactions with the RAB8, huntingtin, and transcription factor IIIA proteins. Alternative splicing results in multiple transcript variants encoding the same protein. [provided by RefSeq, Jul 2008]

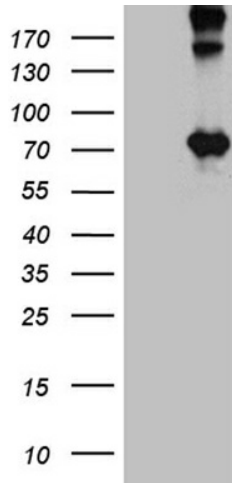
Synonyms:

ALS12; FIP2; GLC1E; HIP7; HYPL; NRP; TFIIIA-INTP

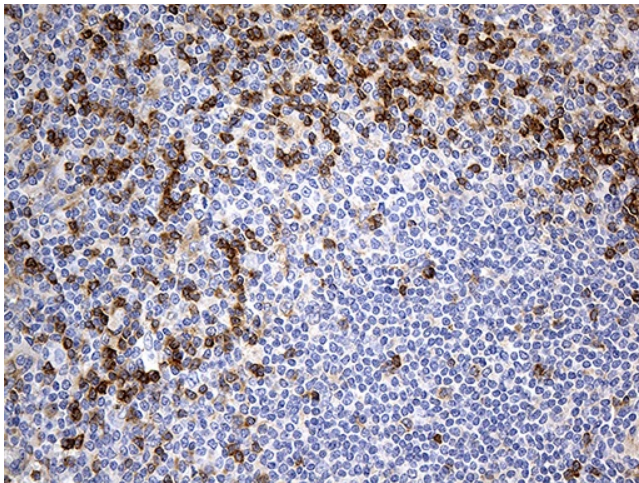
Protein Families:

Druggable Genome

Product images:



HEK293T cells were transfected with the pCMV6-ENTRY control (Cat# [PS100001], Left lane) or pCMV6-ENTRY OPTN (Cat# [RC202470], Right lane) cDNA for 48 hrs and lysed. Equivalent amounts of cell lysates (5 ug per lane) were separated by SDS-PAGE and immunoblotted with anti-OPTN antibody (Cat# [TA812132]). Positive lysates [LY423390] (100ug) and [LC423390] (20ug) can be purchased separately from OriGene.



Immunohistochemical staining of paraffin-embedded Human spleen tissue within the normal limits using anti-OPTN mouse monoclonal antibody. (Heat-induced epitope retrieval by 1mM EDTA in 10mM Tris buffer (pH8.5) at 120°C for 3min, [TA812132]) (1:500)