

Product datasheet for **TA812129AM**

Drebrin (DBN1) Mouse Monoclonal Antibody (Biotin conjugated) [Clone ID: OTI4B3]

Product data:

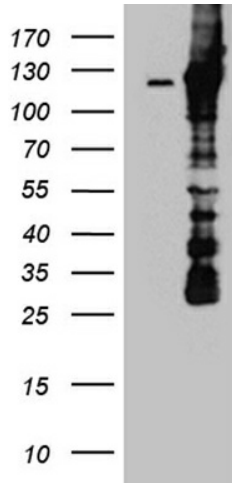
Product Type:	Primary Antibodies
Clone Name:	OTI4B3
Applications:	IHC, WB
Recommended Dilution:	WB 1:500~2000, IHC 1:2000
Reactivity:	Human, Mouse, Rat
Host:	Mouse
Isotype:	IgG1
Clonality:	Monoclonal
Immunogen:	Human recombinant protein fragment corresponding to amino acids 2-240 of human DBN1 (NP_004386) produced in E.coli.
Formulation:	PBS (pH 7.3) containing 1% BSA, 50% glycerol and 0.02% sodium azide.
Concentration:	0.5 mg/ml
Purification:	Purified from mouse ascites fluids or tissue culture supernatant by affinity chromatography (protein A/G)
Conjugation:	Biotin
Storage:	Store at -20°C as received.
Stability:	Stable for 12 months from date of receipt.
Predicted Protein Size:	71.3 kDa
Gene Name:	drebrin 1
Database Link:	NP_004386 Entrez Gene 56320 Mouse Entrez Gene 1627 Human Q16643
Background:	The protein encoded by this gene is a cytoplasmic actin-binding protein thought to play a role in the process of neuronal growth. It is a member of the drebrin family of proteins that are developmentally regulated in the brain. A decrease in the amount of this protein in the brain has been implicated as a possible contributing factor in the pathogenesis of memory disturbance in Alzheimer's disease. At least two alternative splice variants encoding different protein isoforms have been described for this gene. [provided by RefSeq, Jul 2008]



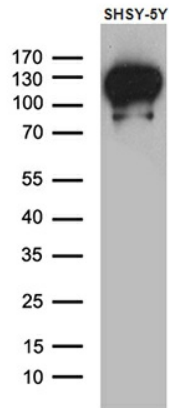
[View online »](#)

Synonyms: D0S117E

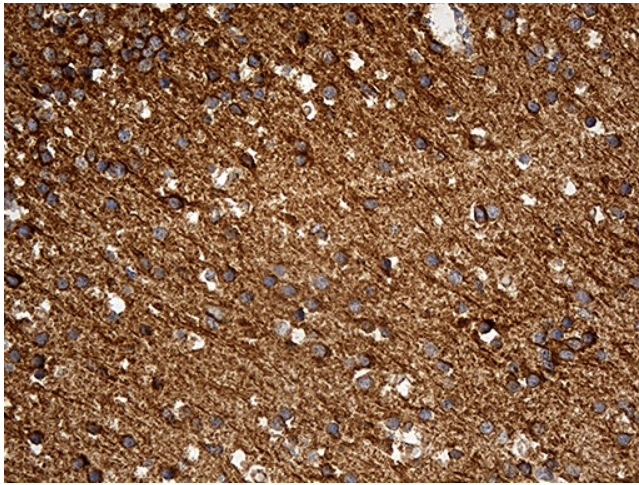
Product images:



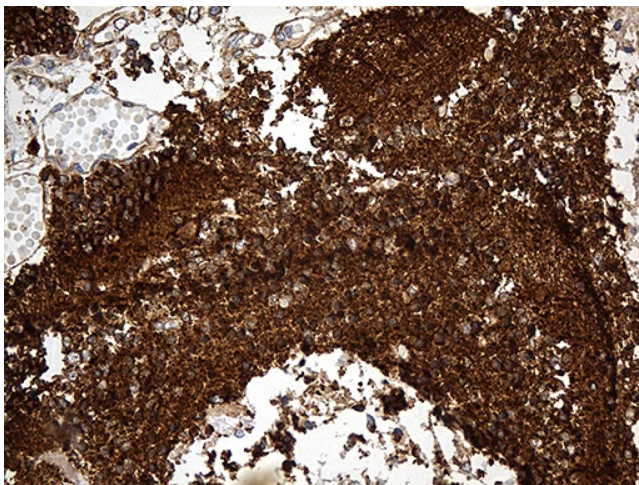
HEK293T cells were transfected with the pCMV6-ENTRY control (Left lane) or pCMV6-ENTRY DBN1 ([RC200372], Right lane) cDNA for 48 hrs and lysed. Equivalent amounts of cell lysates (5 ug per lane) were separated by SDS-PAGE and immunoblotted with anti-DBN1. Positive lysates [LY418021] (100ug) and [LC418021] (20ug) can be purchased separately from OriGene.



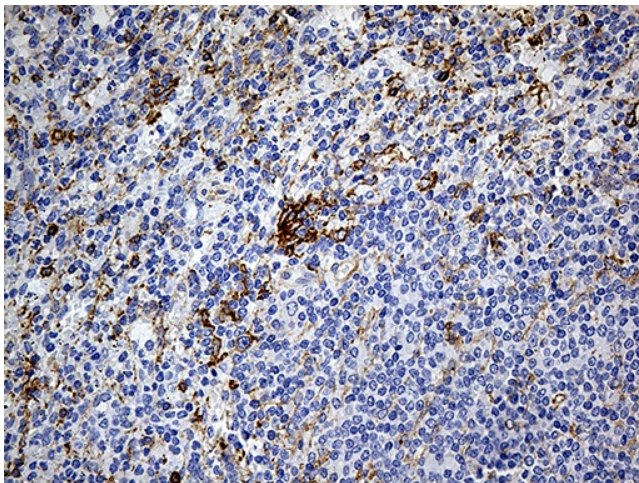
Western blot analysis of extracts (35ug) from SHSY-5Y cell line by using anti-DBN1 monoclonal antibody (1:500).



Immunohistochemical staining of paraffin-embedded Human adult brain tissue within the normal limits using anti-DBN1 mouse monoclonal antibody. (Heat-induced epitope retrieval by 1mM EDTA in 10mM Tris buffer (pH8.5) at 120°C for 3min, [TA812129]) (1:2000)



Immunohistochemical staining of paraffin-embedded Human embryonic cerebellum within the normal limits using anti-DBN1 mouse monoclonal antibody. (Heat-induced epitope retrieval by 1mM EDTA in 10mM Tris buffer (pH8.5) at 120°C for 3min, [TA812129]) (1:2000)



Immunohistochemical staining of paraffin-embedded Human spleen tissue within the normal limits using anti-DBN1 mouse monoclonal antibody. (Heat-induced epitope retrieval by 1mM EDTA in 10mM Tris buffer (pH8.5) at 120°C for 3min, [TA812129]) (1:2000)