

Product datasheet for **TA812128BM**

Drebrin (DBN1) Mouse Monoclonal Antibody (HRP conjugated) [Clone ID: OTI4B1]

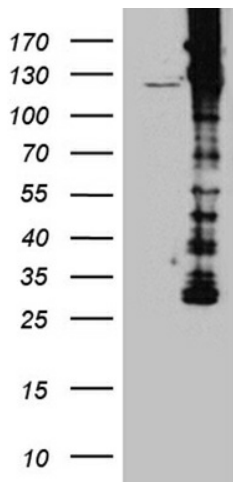
Product data:

Product Type:	Primary Antibodies
Clone Name:	OTI4B1
Applications:	IHC, WB
Recommended Dilution:	WB 1:500~2000, IHC 1:2000
Reactivity:	Human, Mouse, Rat
Host:	Mouse
Isotype:	IgG1
Clonality:	Monoclonal
Immunogen:	Human recombinant protein fragment corresponding to amino acids 2-240 of human DBN1 (NP_004386) produced in E.coli.
Formulation:	PBS (pH 7.3) containing 1% BSA, 50% glycerol.
Concentration:	0.5 mg/ml
Purification:	Purified from mouse ascites fluids or tissue culture supernatant by affinity chromatography (protein A/G)
Conjugation:	HRP
Storage:	Store at -20°C as received.
Stability:	Stable for 12 months from date of receipt.
Gene Name:	drebrin 1
Database Link:	NP_004386 Entrez Gene 56320 Mouse Entrez Gene 1627 Human Q16643
Synonyms:	D0S117E

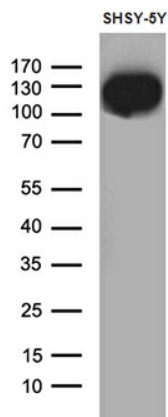


[View online »](#)

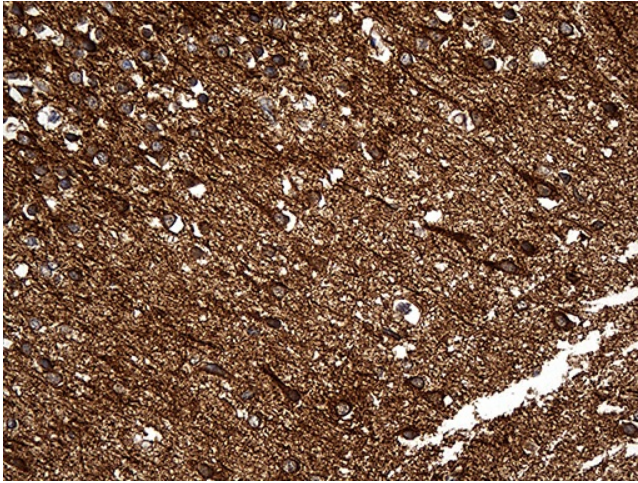
Product images:



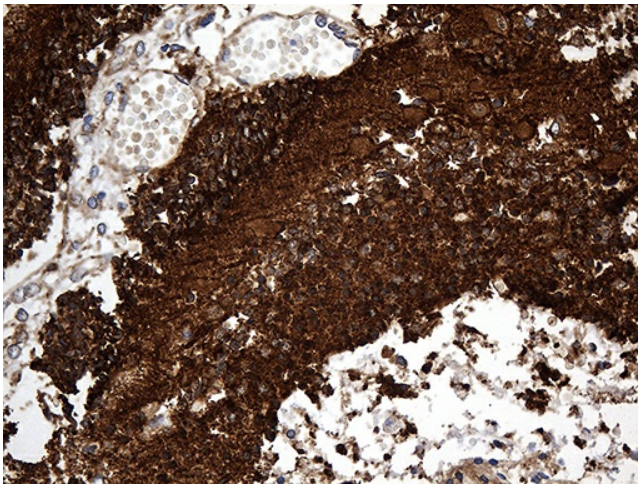
HEK293T cells were transfected with the pCMV6-ENTRY control (Cat# [PS100001], Left lane) or pCMV6-ENTRY DBN1 (Cat# [RC200372], Right lane) cDNA for 48 hrs and lysed. Equivalent amounts of cell lysates (5 ug per lane) were separated by SDS-PAGE and immunoblotted with anti-DBN1 (Cat# [TA812128]). Positive lysates [LY418021] (100ug) and [LC418021] (20ug) can be purchased separately from OriGene.



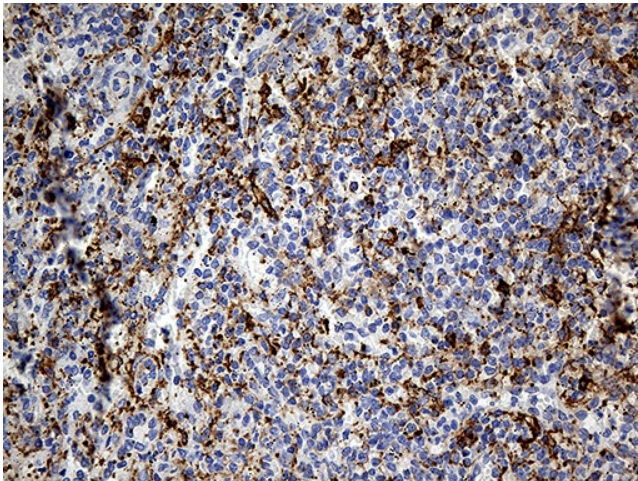
Western blot analysis of extracts (35ug) from SHSY-5Y cell line by using anti-DBN1 monoclonal antibody (1:500).



Immunohistochemical staining of paraffin-embedded Human adult brain tissue within the normal limits using anti-DBN1 mouse monoclonal antibody. (Heat-induced epitope retrieval by 1mM EDTA in 10mM Tris buffer (pH8.5) at 120°C for 3min, [TA812128]) (1:2000)



Immunohistochemical staining of paraffin-embedded Human embryonic cerebellum within the normal limits using anti-DBN1 mouse monoclonal antibody. (Heat-induced epitope retrieval by 1mM EDTA in 10mM Tris buffer (pH8.5) at 120°C for 3min, [TA812128]) (1:2000)



Immunohistochemical staining of paraffin-embedded Human spleen tissue within the normal limits using anti-DBN1 mouse monoclonal antibody. (Heat-induced epitope retrieval by 1mM EDTA in 10mM Tris buffer (pH8.5) at 120°C for 3min, [TA812128]) (1:2000)