

## Product datasheet for **TA812125BM**

### Drebrin (DBN1) Mouse Monoclonal Antibody (HRP conjugated) [Clone ID: OTI1B8]

#### Product data:

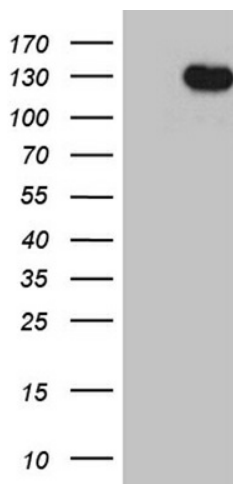
Product Type:	Primary Antibodies
Clone Name:	OTI1B8
Applications:	WB
Recommended Dilution:	WB 1:2000
Reactivity:	Human, Mouse, Rat
Host:	Mouse
Isotype:	IgG1
Clonality:	Monoclonal
Immunogen:	Human recombinant protein fragment corresponding to amino acids 2-240 of human DBN1 (NP_004386) produced in E.coli.
Formulation:	PBS (pH 7.3) containing 1% BSA, 50% glycerol.
Concentration:	0.5 mg/ml
Purification:	Purified from mouse ascites fluids or tissue culture supernatant by affinity chromatography (protein A/G)
Conjugation:	HRP
Storage:	Store at -20°C as received.
Stability:	Stable for 12 months from date of receipt.
Predicted Protein Size:	71.3 kDa
Gene Name:	drebrin 1
Database Link:	<a href="#">NP_004386</a> <a href="#">Entrez Gene 56320 Mouse</a> <a href="#">Entrez Gene 1627 Human</a> <a href="#">Q16643</a>
Background:	The protein encoded by this gene is a cytoplasmic actin-binding protein thought to play a role in the process of neuronal growth. It is a member of the drebrin family of proteins that are developmentally regulated in the brain. A decrease in the amount of this protein in the brain has been implicated as a possible contributing factor in the pathogenesis of memory disturbance in Alzheimer's disease. At least two alternative splice variants encoding different protein isoforms have been described for this gene. [provided by RefSeq, Jul 2008]



[View online »](#)

Synonyms: D0S117E

### Product images:



HEK293T cells were transfected with the pCMV6-ENTRY control (Left lane) or pCMV6-ENTRY DBN1 ([RC200372], Right lane) cDNA for 48 hrs and lysed. Equivalent amounts of cell lysates (5 ug per lane) were separated by SDS-PAGE and immunoblotted with anti-DBN1. Positive lysates [LY418021] (100ug) and [LC418021] (20ug) can be purchased separately from OriGene.