

Product datasheet for **TA812122**

HSPA1L Mouse Monoclonal Antibody [Clone ID: OTI3B5]

Product data:

Product Type:	Primary Antibodies
Clone Name:	OTI3B5
Applications:	WB
Recommended Dilution:	WB 1:2000
Reactivity:	Human, Mouse, Rat
Host:	Mouse
Isotype:	IgG2b
Clonality:	Monoclonal
Immunogen:	Human recombinant protein fragment corresponding to amino acids 400-641 of human HSPA1L (NP_005518) produced in E.coli.
Formulation:	PBS (pH 7.3) containing 1% BSA, 50% glycerol and 0.02% sodium azide.
Concentration:	1 mg/ml
Purification:	Purified from mouse ascites fluids or tissue culture supernatant by affinity chromatography (protein A/G)
Conjugation:	Unconjugated
Storage:	Store at -20°C as received.
Stability:	Stable for 12 months from date of receipt.
Predicted Protein Size:	70.2 kDa
Gene Name:	heat shock protein family A (Hsp70) member 1 like
Database Link:	NP_005518 Entrez Gene 15482 Mouse Entrez Gene 24963 Rat Entrez Gene 3305 Human P34931
Background:	This gene encodes a 70kDa heat shock protein. In conjunction with other heat shock proteins, this protein stabilizes existing proteins against aggregation and mediates the folding of newly translated proteins in the cytosol and in organelles. The gene is located in the major histocompatibility complex class III region, in a cluster with two closely related genes which also encode isoforms of the 70kDa heat shock protein. [provided by RefSeq, Jul 2008]

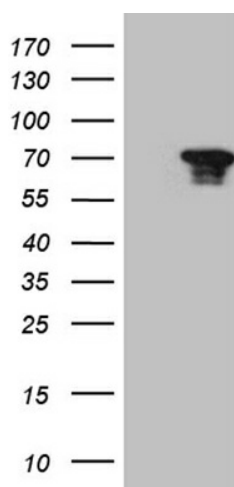


[View online »](#)

Synonyms: HSP70-1L; HSP70-HOM; HSP70T; hum70t

Protein Pathways: Antigen processing and presentation, Endocytosis, MAPK signaling pathway, Spliceosome

Product images:



HEK293T cells were transfected with the pCMV6-ENTRY control (Left lane) or pCMV6-ENTRY HSPA1L ([RC205351], Right lane) cDNA for 48 hrs and lysed. Equivalent amounts of cell lysates (5 ug per lane) were separated by SDS-PAGE and immunoblotted with anti-HSPA1. Positive lysates [LY417244] (100ug) and [LC417244] (20ug) can be purchased separately from OriGene.