

## Product datasheet for **TA812076**

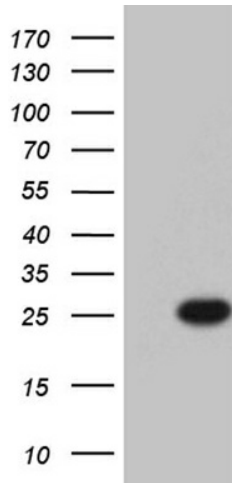
### BCAS2 Mouse Monoclonal Antibody [Clone ID: OTI10H7]

#### Product data:

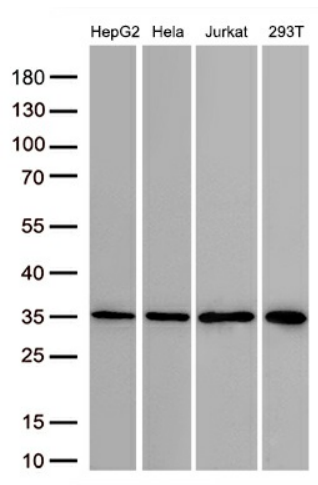
Product Type:	Primary Antibodies
Clone Name:	OTI10H7
Applications:	WB
Recommended Dilution:	WB 1:2000
Reactivity:	Human, Mouse, Rat
Host:	Mouse
Isotype:	IgG1
Clonality:	Monoclonal
Immunogen:	Full length human recombinant protein of human BCAS2 (NP_005863) produced in E.coli.
Formulation:	PBS (pH 7.3) containing 1% BSA, 50% glycerol and 0.02% sodium azide.
Concentration:	1 mg/ml
Purification:	Purified from mouse ascites fluids or tissue culture supernatant by affinity chromatography (protein A/G)
Conjugation:	Unconjugated
Storage:	Store at -20°C as received.
Stability:	Stable for 12 months from date of receipt.
Predicted Protein Size:	26 kDa
Gene Name:	breast carcinoma amplified sequence 2
Database Link:	<a href="#">NP_005863</a> <a href="#">Entrez Gene 68183 Mouse</a> <a href="#">Entrez Gene 295334 Rat</a> <a href="#">Entrez Gene 10286 Human</a> <a href="#">O75934</a>
Synonyms:	DAM1; Snt309; SPF27
Protein Pathways:	Spliceosome



[View online »](#)

**Product images:**


HEK293T cells were transfected with the pCMV6-ENTRY control (Cat# [PS100001], Left lane) or pCMV6-ENTRY BCAS2 (Cat# [RC205615], Right lane) cDNA for 48 hrs and lysed. Equivalent amounts of cell lysates (5 ug per lane) were separated by SDS-PAGE and immunoblotted with anti-BCAS2(Cat# TA812076). Positive lysates [LY417014] (100ug) and [LC417014] (20ug) can be purchased separately from OriGene.



Western blot analysis of extracts (30ug per lane) from 4 cell lines lysates by using anti-BCAS2 monoclonal antibody(TA812076, 1:2000).