

Product datasheet for **TA812042S**

Apolipoprotein L 1 (APOL1) Mouse Monoclonal Antibody [Clone ID: OTI1D8]

Product data:

Product Type:	Primary Antibodies
Clone Name:	OTI1D8
Applications:	WB
Recommended Dilution:	WB 1:500~2000
Reactivity:	Human
Host:	Mouse
Isotype:	IgG1
Clonality:	Monoclonal
Immunogen:	Human recombinant protein fragment corresponding to amino acids 28-339 of human APOL1 (NP_003652) produced in E.coli.
Formulation:	PBS (pH 7.3) containing 1% BSA, 50% glycerol and 0.02% sodium azide.
Concentration:	1 mg/ml
Purification:	Purified from mouse ascites fluids or tissue culture supernatant by affinity chromatography (protein A/G)
Conjugation:	Unconjugated
Storage:	Store at -20°C as received.
Stability:	Stable for 12 months from date of receipt.
Predicted Protein Size:	43.97 kDa
Gene Name:	apolipoprotein L1
Database Link:	NP_003652 Entrez Gene 8542 Human O14791



[View online »](#)

Background:

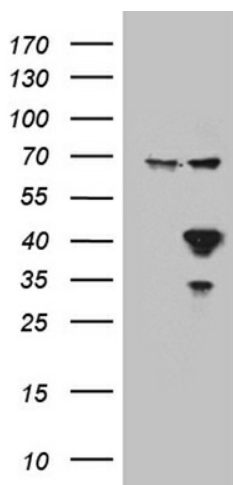
This gene encodes a secreted high density lipoprotein which binds to apolipoprotein A-I. Apolipoprotein A-I is a relatively abundant plasma protein and is the major apoprotein of HDL. It is involved in the formation of most cholesteryl esters in plasma and also promotes efflux of cholesterol from cells. This apolipoprotein L family member may play a role in lipid exchange and transport throughout the body, as well as in reverse cholesterol transport from peripheral cells to the liver. Several different transcript variants encoding different isoforms have been found for this gene. [provided by RefSeq, Nov 2008]

Synonyms:

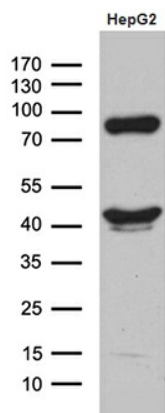
APO-L; APOL; APOL-I; FSGS4

Protein Families:

Secreted Protein, Transmembrane

Product images:


HEK293T cells were transfected with the pCMV6-ENTRY control (Left lane) or pCMV6-ENTRY APOL1 ([RC211114], Right lane) cDNA for 48 hrs and lysed. Equivalent amounts of cell lysates (5 ug per lane) were separated by SDS-PAGE and immunoblotted with anti-APOL1. Positive lysates [LY418517] (100ug) and [LC418517] (20ug) can be purchased separately from OriGene.



Western blot analysis of extracts (35ug) from HepG2 cell line by using anti-APOL1 monoclonal antibody (1:500).