

## Product datasheet for **TA812028M**

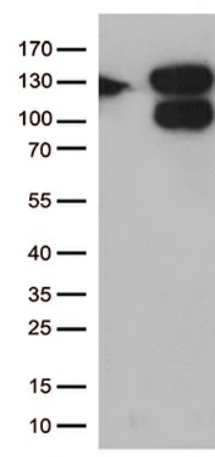
### VPS50 Mouse Monoclonal Antibody [Clone ID: OTI7A8]

#### Product data:

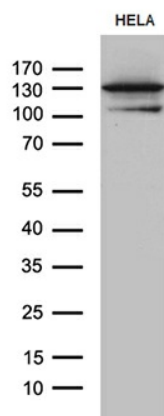
Product Type:	Primary Antibodies
Clone Name:	OTI7A8
Applications:	WB
Recommended Dilution:	WB 1:500
Reactivity:	Human
Host:	Mouse
Isotype:	IgG1
Clonality:	Monoclonal
Immunogen:	Human recombinant protein fragment corresponding to amino acids 700-964 of human CCDC132 (NP_060137) produced in E.coli.
Formulation:	PBS (pH 7.3) containing 1% BSA, 50% glycerol and 0.02% sodium azide.
Concentration:	1 mg/ml
Purification:	Purified from mouse ascites fluids or tissue culture supernatant by affinity chromatography (protein A/G)
Conjugation:	Unconjugated
Storage:	Store at -20°C as received.
Stability:	Stable for 12 months from date of receipt.
Gene Name:	VPS50, EARP/GARPII complex subunit
Database Link:	<a href="#">NP_060137</a> <a href="#">Entrez Gene 55610 Human</a> <a href="#">Q96JG6</a>
Synonyms:	FLJ20097; FLJ23581; KIAA1861; MGC176659

[View online »](#)

## Product images:



HEK293T cells were transfected with the pCMV6-ENTRY control (Cat# [PS100001], Left lane) or pCMV6-ENTRY CCDC132 (Cat# [RC218218], Right lane) cDNA for 48 hrs and lysed. Equivalent amounts of cell lysates (5 ug per lane) were separated by SDS-PAGE and immunoblotted with anti-CCDC132 (Cat# [TA812028])(1:500).



Western blot analysis of extracts (35ug) from Hela cell line by using anti-CCDC132 monoclonal antibody (1:500).