

## Product datasheet for **TA812020AM**

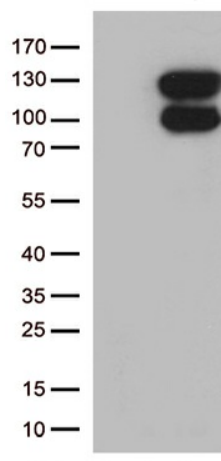
### VPS50 Mouse Monoclonal Antibody (Biotin conjugated) [Clone ID: OTI1E10]

#### Product data:

Product Type:	Primary Antibodies
Clone Name:	OTI1E10
Applications:	WB
Recommended Dilution:	WB 1:500
Reactivity:	Human
Host:	Mouse
Isotype:	IgG1
Clonality:	Monoclonal
Immunogen:	Human recombinant protein fragment corresponding to amino acids 700-964 of human CCDC132 (NP_060137) produced in E.coli.
Formulation:	PBS (pH 7.3) containing 1% BSA, 50% glycerol and 0.02% sodium azide.
Concentration:	0.5 mg/ml
Purification:	Purified from mouse ascites fluids or tissue culture supernatant by affinity chromatography (protein A/G)
Conjugation:	Biotin
Storage:	Store at -20°C as received.
Stability:	Stable for 12 months from date of receipt.
Predicted Protein Size:	111.2 kDa
Gene Name:	VPS50, EARP/GARPII complex subunit
Database Link:	<a href="#">NP_060137</a> <a href="#">Entrez Gene 55610 Human</a> <a href="#">Q96JG6</a>
Synonyms:	CCDC132; VPS54L



[View online »](#)

**Product images:**

HEK293T cells were transfected with the pCMV6-ENTRY control (Left lane) or pCMV6-ENTRY CCDC132 ([RC218218], Right lane) cDNA for 48 hrs and lysed. Equivalent amounts of cell lysates (5 ug per lane) were separated by SDS-PAGE and immunoblotted with anti-CCDC132 (1:500).