

Product datasheet for **TA812009AM**

KLF7 Mouse Monoclonal Antibody (Biotin conjugated) [Clone ID: OTI8D7]

Product data:

Product Type:	Primary Antibodies
Clone Name:	OTI8D7
Applications:	WB
Recommended Dilution:	WB 1:500~2000
Reactivity:	Human, Mouse
Host:	Mouse
Isotype:	IgG1
Clonality:	Monoclonal
Immunogen:	Full length human recombinant protein of human KLF7 (NP_003700) produced in E.coli.
Formulation:	PBS (pH 7.3) containing 1% BSA, 50% glycerol and 0.02% sodium azide.
Concentration:	0.5 mg/ml
Purification:	Purified from mouse ascites fluids or tissue culture supernatant by affinity chromatography (protein A/G)
Conjugation:	Biotin
Storage:	Store at -20°C as received.
Stability:	Stable for 12 months from date of receipt.
Predicted Protein Size:	33.2 kDa
Gene Name:	Kruppel-like factor 7 (ubiquitous)
Database Link:	NP_003700 Entrez Gene 93691 Mouse Entrez Gene 8609 Human O75840
Background:	The protein encoded by this gene is a member of the Kruppel-like transcriptional regulator family. Members in this family regulate cell proliferation, differentiation and survival and contain three C2H2 zinc fingers at the C-terminus that mediate binding to GC-rich sites. This protein may contribute to the progression of type 2 diabetes by inhibiting insulin expression and secretion in pancreatic beta-cells and by deregulating adipocytokine secretion in adipocytes. A pseudogene of this gene is located on the long arm of chromosome 3. Alternative splicing results in multiple transcript variants. [provided by RefSeq, Aug 2012]

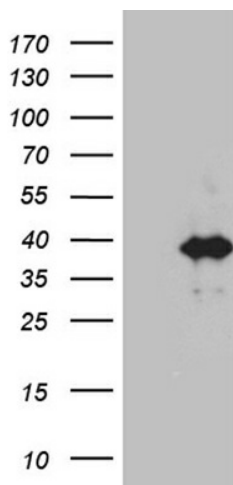


[View online »](#)

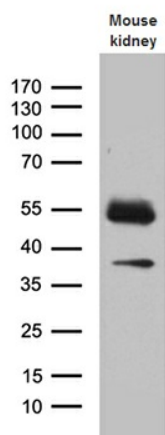
Synonyms: UKLF

Protein Families: Transcription Factors

Product images:



HEK293T cells were transfected with the pCMV6-ENTRY control (Left lane) or pCMV6-ENTRY KLF7 ([RC215688], Right lane) cDNA for 48 hrs and lysed. Equivalent amounts of cell lysates (5 ug per lane) were separated by SDS-PAGE and immunoblotted with anti-KLF7. Positive lysates [LY418489] (100ug) and [LC418489] (20ug) can be purchased separately from OriGene.



Western blot analysis of extracts (35ug) from mouse kidney tissue lysate by using anti-KLF7 monoclonal antibody (1:500).