

## Product datasheet for **TA812001S**

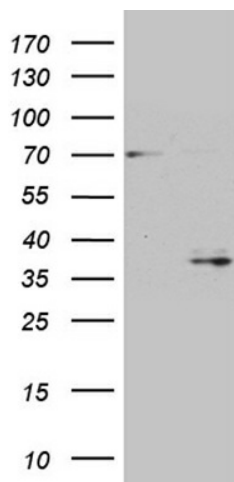
### GSG1 Mouse Monoclonal Antibody [Clone ID: OT11H9]

#### Product data:

Product Type:	Primary Antibodies
Clone Name:	OT11H9
Applications:	WB
Recommended Dilution:	WB 1:500
Reactivity:	Human
Host:	Mouse
Isotype:	IgG1
Clonality:	Monoclonal
Immunogen:	Human recombinant protein fragment corresponding to amino acids 43-246 of human GSG1 (NP_112579) produced in E.coli.
Formulation:	PBS (pH 7.3) containing 1% BSA, 50% glycerol and 0.02% sodium azide.
Concentration:	1 mg/ml
Purification:	Purified from mouse ascites fluids or tissue culture supernatant by affinity chromatography (protein A/G)
Conjugation:	Unconjugated
Storage:	Store at -20°C as received.
Stability:	Stable for 12 months from date of receipt.
Predicted Protein Size:	31.3 kDa
Gene Name:	germ cell associated 1
Database Link:	<a href="#">NP_112579</a> <a href="#">Entrez Gene 83445 Human</a> <a href="#">Q2KHT4</a>
Synonyms:	MGC3146; MGC111023
Protein Families:	Transmembrane



[View online »](#)

**Product images:**

HEK293T cells were transfected with the pCMV6-ENTRY control (Left lane) or pCMV6-ENTRY GSG1 ([RC200978], Right lane) cDNA for 48 hrs and lysed. Equivalent amounts of cell lysates (5 ug per lane) were separated by SDS-PAGE and immunoblotted with anti-GSG1. Positive lysates [LY403106] (100ug) and [LC403106] (20ug) can be purchased separately from OriGene.