

Product datasheet for **TA811979S**

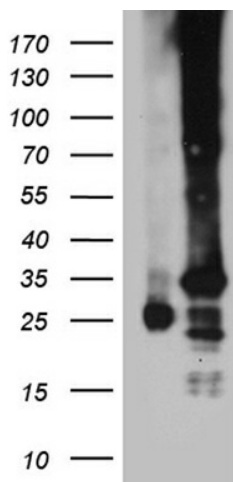
C19orf52 (TIMM29) Mouse Monoclonal Antibody [Clone ID: OTI3C5]

Product data:

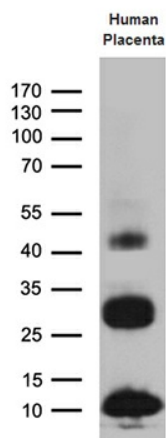
Product Type:	Primary Antibodies
Clone Name:	OTI3C5
Applications:	WB
Recommended Dilution:	WB 1:500~2000
Reactivity:	Human
Host:	Mouse
Isotype:	IgG2b
Clonality:	Monoclonal
Immunogen:	Human recombinant protein fragment corresponding to amino acids 100-260 of human C19orf52 (NP_612367) produced in E.coli.
Formulation:	PBS (pH 7.3) containing 1% BSA, 50% glycerol and 0.02% sodium azide.
Concentration:	1 mg/ml
Purification:	Purified from mouse ascites fluids or tissue culture supernatant by affinity chromatography (protein A/G)
Conjugation:	Unconjugated
Storage:	Store at -20°C as received.
Stability:	Stable for 12 months from date of receipt.
Predicted Protein Size:	29.1 kDa
Gene Name:	chromosome 19 open reading frame 52
Database Link:	NP_612367 Entrez Gene 90580 Human Q9BSF4
Synonyms:	C19orf52; TIM29



[View online »](#)

Product images:


HEK293T cells were transfected with the pCMV6-ENTRY control (Cat# [PS100001], Left lane) or pCMV6-ENTRY C19orf52 (Cat# [RC204291], Right lane) cDNA for 48 hrs and lysed. Equivalent amounts of cell lysates (5 ug per lane) were separated by SDS-PAGE and immunoblotted with anti-C19orf52 antibody (Cat# [TA811979]). Positive lysates [LY408630] (100ug) and [LC408630] (20ug) can be purchased separately from OriGene.



Western blot analysis of extracts (35ug) from human placenta lysate by using anti-C19orf52 monoclonal antibody (1:500).