

## Product datasheet for **TA811977BM**

### ARIH2 Mouse Monoclonal Antibody (HRP conjugated) [Clone ID: OTI7D5]

#### Product data:

Product Type:	Primary Antibodies
Clone Name:	OTI7D5
Applications:	WB
Recommended Dilution:	WB 1:500
Reactivity:	Human, Mouse, Rat
Host:	Mouse
Isotype:	IgG1
Clonality:	Monoclonal
Immunogen:	Human recombinant protein fragment corresponding to amino acids 201-493 of human ARIH2 (NP_006312) produced in E.coli.
Formulation:	PBS (pH 7.3) containing 1% BSA, 50% glycerol.
Concentration:	0.5 mg/ml
Purification:	Purified from mouse ascites fluids or tissue culture supernatant by affinity chromatography (protein A/G)
Conjugation:	HRP
Storage:	Store at -20°C as received.
Stability:	Stable for 12 months from date of receipt.
Predicted Protein Size:	57.6 kDa
Gene Name:	ariadne RBR E3 ubiquitin protein ligase 2
Database Link:	<a href="#">NP_006312</a> <a href="#">Entrez Gene 23807 Mouse</a> <a href="#">Entrez Gene 316005 Rat</a> <a href="#">Entrez Gene 10425 Human</a> <a href="#">O95376</a>
Background:	The protein encoded by this gene is an E3 ubiquitin-protein ligase that polyubiquitinates some proteins, tagging them for degradation. The encoded protein upregulates p53 in some cancer cells and may inhibit myelopoiesis. Several transcript variants encoding different isoforms have been found for this gene, although the full-length nature of some of them have not been determined yet. [provided by RefSeq, Nov 2015]

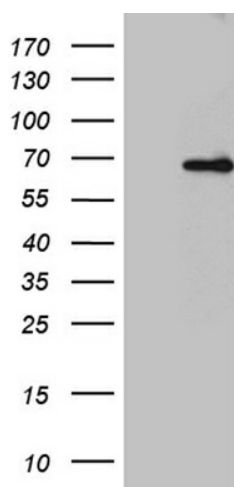


[View online »](#)

Synonyms: ARI2; TRIAD1

Protein Families: Druggable Genome

### Product images:



HEK293T cells were transfected with the pCMV6-ENTRY control (Left lane) or pCMV6-ENTRY ARIH2 ([RC201846], Right lane) cDNA for 48 hrs and lysed. Equivalent amounts of cell lysates (5 ug per lane) were separated by SDS-PAGE and immunoblotted with anti-ARIH2. Positive lysates [LY416714] (100ug) and [LC416714] (20ug) can be purchased separately from OriGene.