

Product datasheet for **TA811975AM**

LAMP1 Mouse Monoclonal Antibody (Biotin conjugated) [Clone ID: OTI10E1]

Product data:

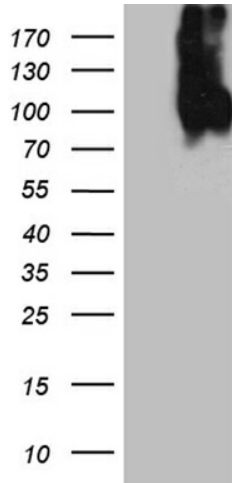
| | |
|-------------------------|--|
| Product Type: | Primary Antibodies |
| Clone Name: | OTI10E1 |
| Applications: | FC, WB |
| Recommended Dilution: | WB 1:500, FLOW 1:25~100 |
| Reactivity: | Human |
| Host: | Mouse |
| Isotype: | IgG1 |
| Clonality: | Monoclonal |
| Immunogen: | Human recombinant protein fragment corresponding to amino acids 29-382 of human LAMP1 (NP_005552) produced in HEK293T cell. |
| Formulation: | PBS (pH 7.3) containing 1% BSA, 50% glycerol and 0.02% sodium azide. |
| Concentration: | 0.5 mg/ml |
| Purification: | Purified from mouse ascites fluids or tissue culture supernatant by affinity chromatography (protein A/G) |
| Conjugation: | Biotin |
| Storage: | Store at -20°C as received. |
| Stability: | Stable for 12 months from date of receipt. |
| Predicted Protein Size: | 44.88 kDa |
| Gene Name: | lysosomal associated membrane protein 1 |
| Database Link: | NP_005552 Entrez Gene 3916 Human P11279 |
| Background: | The protein encoded by this gene is a member of a family of membrane glycoproteins. This glycoprotein provides selectins with carbohydrate ligands. It may also play a role in tumor cell metastasis. [provided by RefSeq, Jul 2008] |
| Synonyms: | CD107a; LAMPA; LGP120 |
| Protein Families: | ES Cell Differentiation/IPS, Transmembrane |



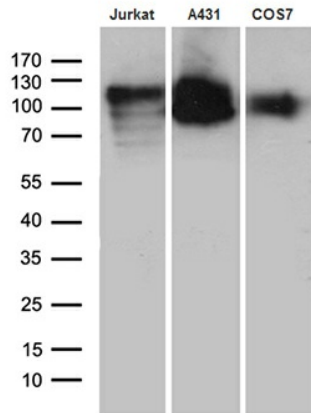
[View online »](#)

Protein Pathways: Lysosome

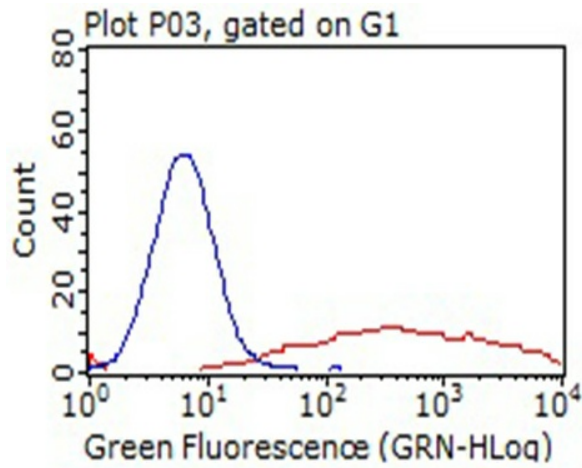
Product images:



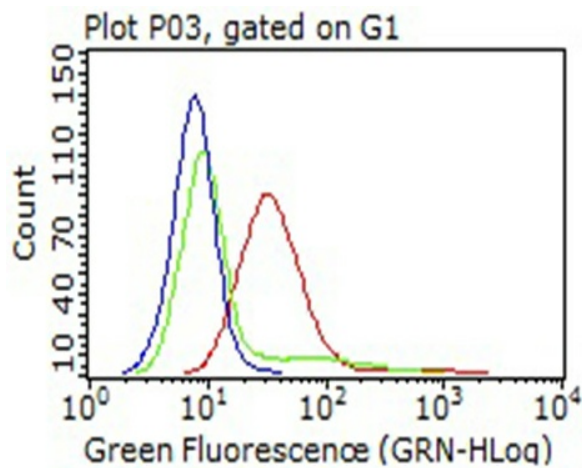
HEK293T cells were transfected with the pCMV6-ENTRY control (Left lane) or pCMV6-ENTRY LAMP1 ([RC219208], Right lane) cDNA for 48 hrs and lysed. Equivalent amounts of cell lysates (5 ug per lane) were separated by SDS-PAGE and immunoblotted with anti-LAMP1. Positive lysates [LY417223] (100ug) and [LC417223] (20ug) can be purchased separately from OriGene.



Western blot analysis of extracts (35ug) from 3 cell lines by using anti-LAMP1 monoclonal antibody (1:500).



HEK293T cells transfected with either [RC219208] overexpress plasmid (Red) or empty vector control plasmid (Blue) were immunostained by anti-LAMP1 antibody ([TA811975]), and then analyzed by flow cytometry (1:100).



Flow cytometric Analysis of living A431 cells, using anti-LAMP1 antibody ([TA811975]), (Red), compared to an IgG isotype control, (green), and negative control (PBS), (Blue) (1:25).