

Product datasheet for **TA811972AM**

C3orf25 (EFCAB12) Mouse Monoclonal Antibody (Biotin conjugated) [Clone ID: OTI6C7]

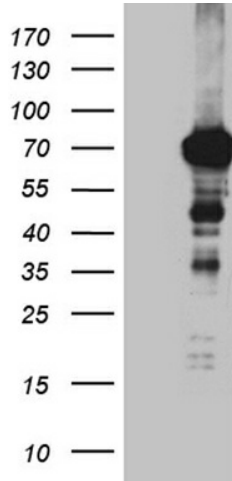
Product data:

Product Type:	Primary Antibodies
Clone Name:	OTI6C7
Applications:	WB
Recommended Dilution:	WB 1:2000
Reactivity:	Human
Host:	Mouse
Isotype:	IgG1
Clonality:	Monoclonal
Immunogen:	Full length human recombinant protein of human C3orf25 (NP_997190) produced in E.coli.
Formulation:	PBS (pH 7.3) containing 1% BSA, 50% glycerol and 0.02% sodium azide.
Concentration:	0.5 mg/ml
Purification:	Purified from mouse ascites fluids or tissue culture supernatant by affinity chromatography (protein A/G)
Conjugation:	Biotin
Storage:	Store at -20°C as received.
Stability:	Stable for 12 months from date of receipt.
Predicted Protein Size:	66.4 kDa
Gene Name:	EF-hand calcium binding domain 12
Database Link:	NP_997190 Entrez Gene 90288 Human Q6NXP0
Synonyms:	C3orf25



[View online »](#)

Product images:



HEK293T cells were transfected with the pCMV6-ENTRY control (Left lane) or pCMV6-ENTRY C3orf25 ([RC209876], Right lane) cDNA for 48 hrs and lysed. Equivalent amounts of cell lysates (5 ug per lane) were separated by SDS-PAGE and immunoblotted with anti-C3or. Positive lysates [LY404086] (100ug) and [LC404086] (20ug) can be purchased separately from OriGene.