

## Product datasheet for **TA811963**

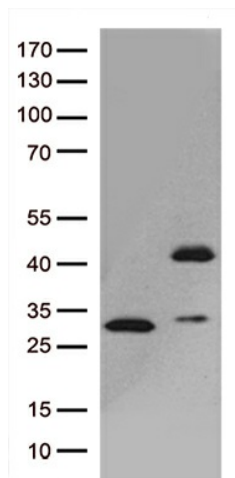
### GIPC (GIPC1) Mouse Monoclonal Antibody [Clone ID: OTI6A6]

#### Product data:

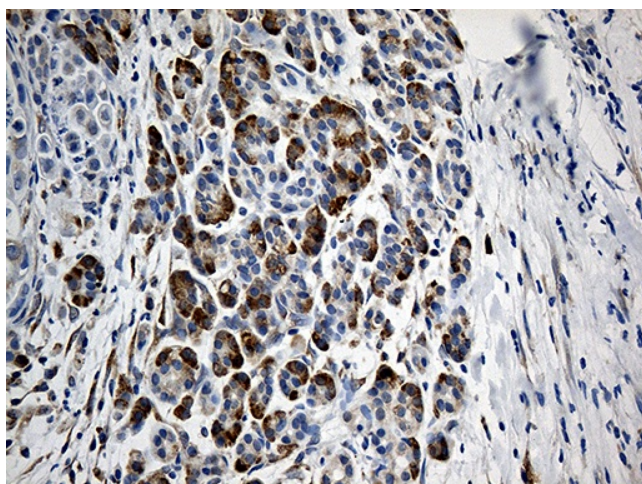
Product Type:	Primary Antibodies
Clone Name:	OTI6A6
Applications:	IHC, WB
Recommended Dilution:	IHC 1:500
Reactivity:	Human, Mouse, Rat
Host:	Mouse
Isotype:	IgG1
Clonality:	Monoclonal
Immunogen:	Full length human recombinant protein of human GIPC1 (NP_974199) produced in E.coli.
Formulation:	PBS (pH 7.3) containing 1% BSA, 50% glycerol and 0.02% sodium azide.
Concentration:	1 mg/ml
Purification:	Purified from mouse ascites fluids or tissue culture supernatant by affinity chromatography (protein A/G)
Conjugation:	Unconjugated
Storage:	Store at -20°C as received.
Stability:	Stable for 12 months from date of receipt.
Predicted Protein Size:	35.9 kDa
Gene Name:	GIPC PDZ domain containing family member 1
Database Link:	<a href="#">NP_974199</a> <a href="#">Entrez Gene 67903 Mouse</a> <a href="#">Entrez Gene 83823 Rat</a> <a href="#">Entrez Gene 10755 Human</a> <a href="#">O14908</a>
Background:	GIPC1 is a scaffolding protein that regulates cell surface receptor expression and trafficking (Lee et al., 2008 [PubMed 18775991]). [supplied by OMIM, Apr 2009]
Synonyms:	C19orf3; GIPC; GLUT1CBP; Hs.6454; IIP-1; NIP; RGS19IP1; SEMCAP; SYNECTIIN; SYNECTIN; TIP-2
Protein Families:	Druggable Genome



[View online »](#)

**Product images:**

HEK293T cells were transfected with the pCMV6-ENTRY control (Left lane) or pCMV6-ENTRY GIPC1 (RC201175), Right lane) cDNA for 48 hrs and lysed. Equivalent amounts of cell lysates (5 ug per lane) were separated by SDS-PAGE and immunoblotted with anti-GIPC1. Positive lysates [LY404363] (100ug) and [LC404363] (20ug) can be purchased separately from OriGene.



Immunohistochemical staining of paraffin-embedded Carcinoma of Human pancreas tissue using anti-GIPC1 mouse monoclonal antibody. (Heat-induced epitope retrieval by 1mM EDTA in 10mM Tris buffer (pH8.5) at 120°C for 3min, TA811963) (1:500)