

Product datasheet for **TA811961**

GIPC (GIPC1) Mouse Monoclonal Antibody [Clone ID: OTI5C10]

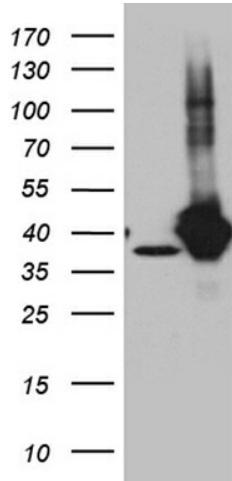
Product data:

| | |
|-------------------------|--|
| Product Type: | Primary Antibodies |
| Clone Name: | OTI5C10 |
| Applications: | IHC, WB |
| Recommended Dilution: | WB 1:500~2000, IHC 1:500 |
| Reactivity: | Human, Mouse, Rat |
| Host: | Mouse |
| Isotype: | IgG2a |
| Clonality: | Monoclonal |
| Immunogen: | Full length human recombinant protein of human GIPC1 (NP_974199) produced in E.coli. |
| Formulation: | PBS (pH 7.3) containing 1% BSA, 50% glycerol and 0.02% sodium azide. |
| Concentration: | 1 mg/ml |
| Purification: | Purified from mouse ascites fluids or tissue culture supernatant by affinity chromatography (protein A/G) |
| Conjugation: | Unconjugated |
| Storage: | Store at -20°C as received. |
| Stability: | Stable for 12 months from date of receipt. |
| Predicted Protein Size: | 35.9 kDa |
| Gene Name: | GIPC PDZ domain containing family member 1 |
| Database Link: | NP_974199 Entrez Gene 67903 Mouse Entrez Gene 83823 Rat Entrez Gene 10755 Human O14908 |
| Background: | GIPC1 is a scaffolding protein that regulates cell surface receptor expression and trafficking (Lee et al., 2008 [PubMed 18775991]). [supplied by OMIM, Apr 2009] |
| Synonyms: | C19orf3; GIPC; GLUT1CBP; Hs.6454; IIP-1; NIP; RGS19IP1; SEMCAP; SYNECTIIN; SYNECTIN; TIP-2 |
| Protein Families: | Druggable Genome |

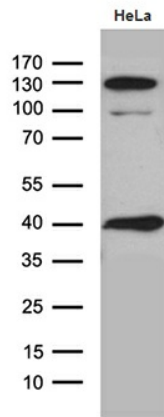


[View online »](#)

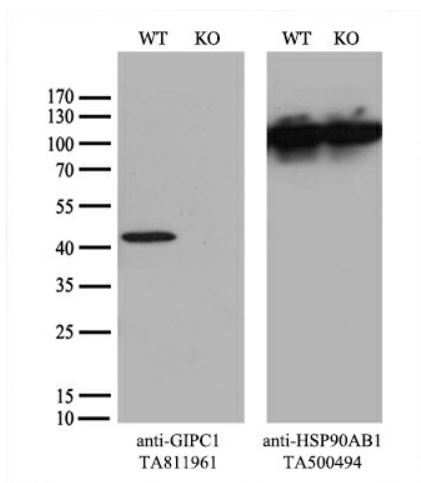
Product images:



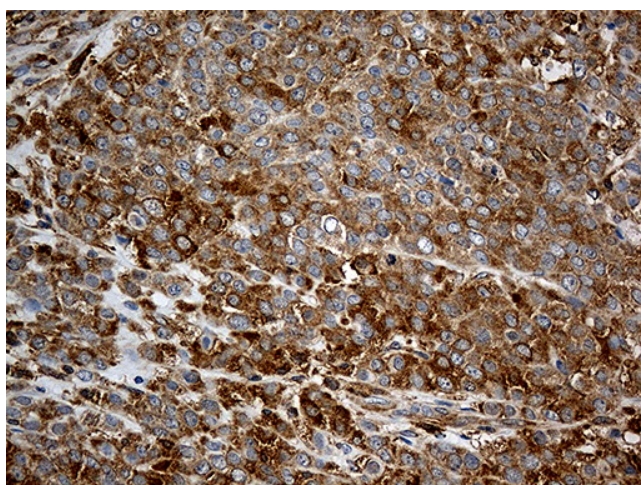
HEK293T cells were transfected with the pCMV6-ENTRY control (Left lane) or pCMV6-ENTRY GIPC1 ([RC201175], Right lane) cDNA for 48 hrs and lysed. Equivalent amounts of cell lysates (5 ug per lane) were separated by SDS-PAGE and immunoblotted with anti-GIPC1. Positive lysates [LY404363] (100ug) and [LC404363] (20ug) can be purchased separately from OriGene.



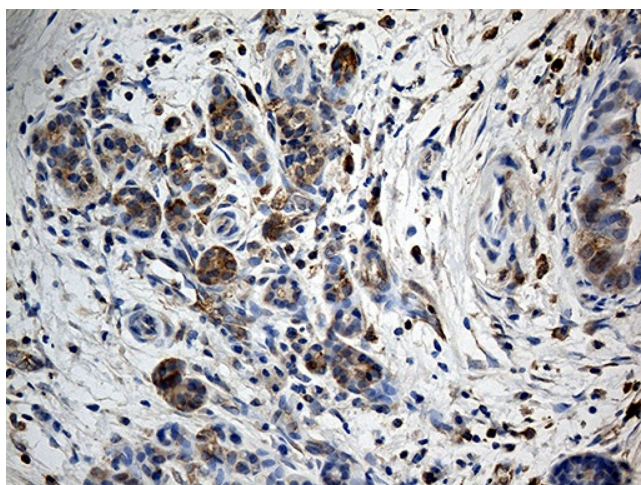
Western blot analysis of extracts (35ug) from HeLa cell line by using anti-GIPC1 monoclonal antibody (1:500).



Equivalent amounts of cell lysates (10 ug per lane) of wild-type 293T cells (WT, Cat# LC810293T) and GIPC1-Knockout 293T cells (KO, Cat# [LC811884]) were separated by SDS-PAGE and immunoblotted with anti-GIPC1 monoclonal antibody TA811961 (1:500^{*}). Then the blotted membrane was stripped and reprobed with anti-HSP90 antibody as a loading control.



Immunohistochemical staining of paraffin-embedded Adenocarcinoma of Human breast tissue using anti-GIPC1 mouse monoclonal antibody. (Heat-induced epitope retrieval by 1mM EDTA in 10mM Tris buffer (pH8.5) at 120°C for 3min, TA811961) (1:500)



Immunohistochemical staining of paraffin-embedded Carcinoma of Human pancreas tissue using anti-GIPC1 mouse monoclonal antibody. (Heat-induced epitope retrieval by 1mM EDTA in 10mM Tris buffer (pH8.5) at 120°C for 3min, TA811961) (1:500)