

Product datasheet for **TA811953**

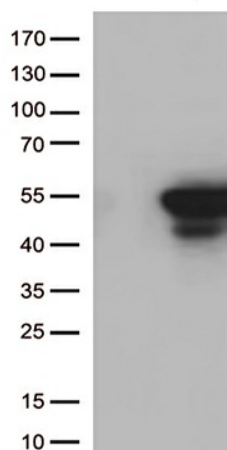
CDK15 Mouse Monoclonal Antibody [Clone ID: OTI5C4]

Product data:

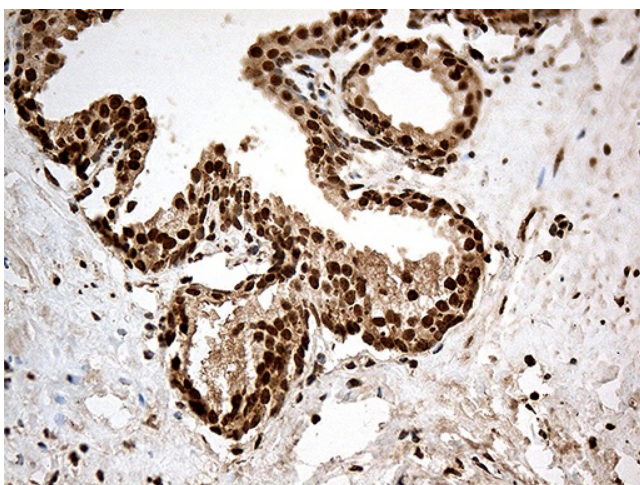
Product Type:	Primary Antibodies
Clone Name:	OTI5C4
Applications:	IHC, WB
Recommended Dilution:	IHC 1:500
Reactivity:	Human, Mouse, Rat
Host:	Mouse
Isotype:	IgG2b
Clonality:	Monoclonal
Immunogen:	Human recombinant protein fragment corresponding to amino acids 293-378 of human CDK15 (NP_631897) produced in E.coli.
Formulation:	PBS (pH 7.3) containing 1% BSA, 50% glycerol and 0.02% sodium azide.
Concentration:	1 mg/ml
Purification:	Purified from mouse ascites fluids or tissue culture supernatant by affinity chromatography (protein A/G)
Conjugation:	Unconjugated
Storage:	Store at -20°C as received.
Stability:	Stable for 12 months from date of receipt.
Predicted Protein Size:	43.4 kDa
Gene Name:	cyclin-dependent kinase 15
Database Link:	NP_631897 Entrez Gene 271697 Mouse Entrez Gene 301440 Rat Entrez Gene 65061 Human Q96Q40
Synonyms:	ALS2CR7; PFTAIRES2; PFTK2
Protein Families:	Druggable Genome, Protein Kinase



[View online »](#)

Product images:

HEK293T cells were transfected with the pCMV6-ENTRY control (Left lane) or pCMV6-ENTRY CDK15 ([RC219623], Right lane) cDNA for 48 hrs and lysed. Equivalent amounts of cell lysates (5 ug per lane) were separated by SDS-PAGE and immunoblotted with anti-CDK15 (1:500).



Immunohistochemical staining of paraffin-embedded Carcinoma of Human prostate tissue using anti-CDK15 mouse monoclonal antibody. (Heat-induced epitope retrieval by 1mM EDTA in 10mM Tris buffer (pH8.5) at 120°C for 3min, TA811953) (1:500)