

## Product datasheet for **TA811947AM**

### **TOMM40 Mouse Monoclonal Antibody (Biotin conjugated) [Clone ID: OTI9A3]**

#### **Product data:**

Product Type:	Primary Antibodies
Clone Name:	OTI9A3
Applications:	IHC, WB
Recommended Dilution:	WB 1:500, IHC 1:500
Reactivity:	Human, Mouse, Rat
Host:	Mouse
Isotype:	IgG2b
Clonality:	Monoclonal
Immunogen:	Full length human recombinant protein of human TOMM40 (NP_006105) produced in E.coli.
Formulation:	PBS (pH 7.3) containing 1% BSA, 50% glycerol and 0.02% sodium azide.
Concentration:	0.5 mg/ml
Purification:	Purified from mouse ascites fluids or tissue culture supernatant by affinity chromatography (protein A/G)
Conjugation:	Biotin
Storage:	Store at -20°C as received.
Stability:	Stable for 12 months from date of receipt.
Predicted Protein Size:	37.7 kDa
Gene Name:	translocase of outer mitochondrial membrane 40
Database Link:	<a href="#">NP_006105</a> <a href="#">Entrez Gene 53333 Mouse</a> <a href="#">Entrez Gene 308416 Rat</a> <a href="#">Entrez Gene 10452 Human</a> <a href="#">O96008</a>
Background:	The protein encoded by this gene is localized in the outer membrane of the mitochondria. It is the channel-forming subunit of the translocase of the mitochondrial outer membrane (TOM) complex that is essential for import of protein precursors into mitochondria. Alternatively spliced transcript variants have been found for this gene. [provided by RefSeq, Aug 2015]
Synonyms:	C19orf1; D19S1177E; PER-EC1; PEREC1; TOM40

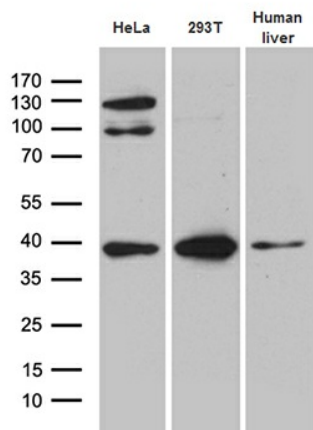


[View online »](#)

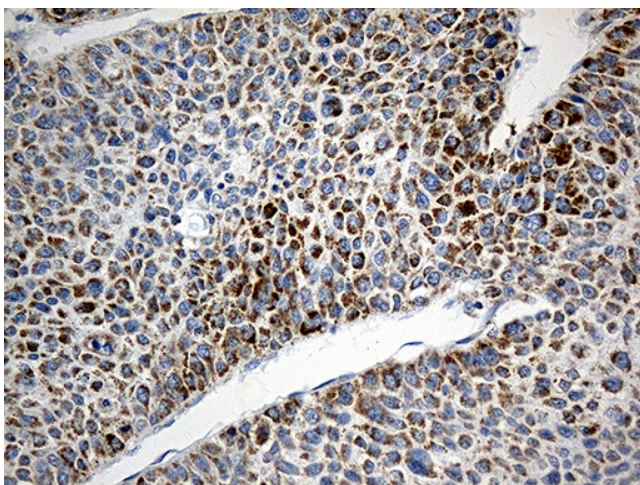
Protein Families: Druggable Genome, Ion Channels: Other

Protein Pathways: Amyotrophic lateral sclerosis (ALS)

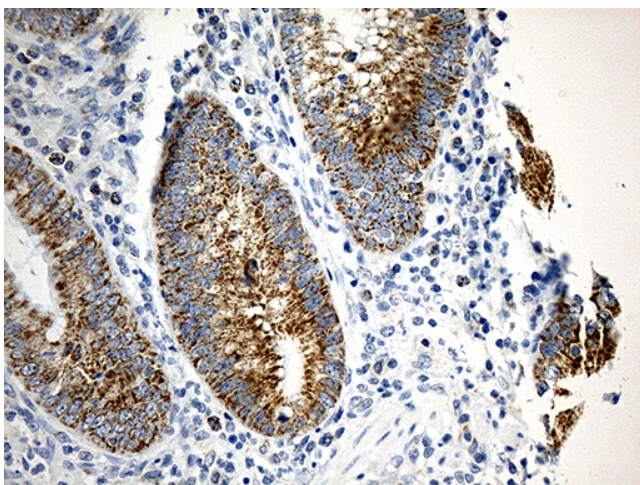
### Product images:



Western blot analysis of extracts (35ug) from 2 cell lines and human liver tissue lysate by using anti-TOMM40 monoclonal antibody (1:500).



Immunohistochemical staining of paraffin-embedded Carcinoma of Human liver tissue using anti-TOMM40 mouse monoclonal antibody. (Heat-induced epitope retrieval by 1mM EDTA in 10mM Tris buffer (pH8.5) at 120°C for 3min, [TA811947]) (1:500)



Immunohistochemical staining of paraffin-embedded Human appendix tissue within the normal limits using anti-TOMM40 mouse monoclonal antibody. (Heat-induced epitope retrieval by 1mM EDTA in 10mM Tris buffer (pH8.5) at 120°C for 3min, [TA811947]) (1:500)