

Product datasheet for **TA811938BM**

BRUNOL6 (CELF6) Mouse Monoclonal Antibody (HRP conjugated) [Clone ID: OTI5G3]

Product data:

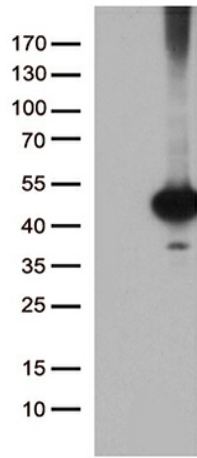
Product Type:	Primary Antibodies
Clone Name:	OTI5G3
Applications:	WB
Recommended Dilution:	WB 1:250~2000
Reactivity:	Human, Mouse
Host:	Mouse
Isotype:	IgG1
Clonality:	Monoclonal
Immunogen:	Full length human recombinant protein of human CELF6 (NP_443072) produced in E.coli.
Formulation:	PBS (pH 7.3) containing 1% BSA, 50% glycerol.
Concentration:	0.5 mg/ml
Purification:	Purified from mouse ascites fluids or tissue culture supernatant by affinity chromatography (protein A/G)
Conjugation:	HRP
Storage:	Store at -20°C as received.
Stability:	Stable for 12 months from date of receipt.
Predicted Protein Size:	50.3 kDa
Gene Name:	CUGBP, Elav-like family member 6
Database Link:	NP_443072 Entrez Gene 76183 Mouse Entrez Gene 60677 Human Q96J87
Background:	Members of the CELF/BRUNOL protein family contain two N-terminal RNA recognition motif (RRM) domains, one C-terminal RRM domain, and a divergent segment of 160-230 aa between the second and third RRM domains. Members of this protein family regulate pre-mRNA alternative splicing and may also be involved in mRNA editing, and translation. Multiple alternatively spliced transcript variants encoding different isoforms have been identified in this gene. [provided by RefSeq, Feb 2010]



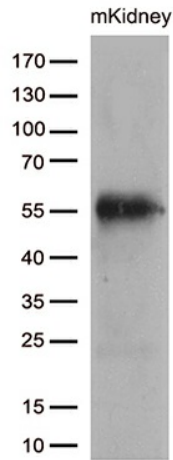
[View online »](#)

Synonyms: BRUNOL6

Product images:



HEK293T cells were transfected with the pCMV6-ENTRY control (Cat# [PS100001], Left lane) or pCMV6-ENTRY CELF6 (Cat# [RC205606], Right lane) cDNA for 48 hrs and lysed. Equivalent amounts of cell lysates (5 ug per lane) were separated by SDS-PAGE and immunoblotted with anti-CELF6 (Cat# [TA811938])(1:2000). Positive lysates [LY409451] (100ug) and [LC409451] (20ug) can be purchased separately from OriGene.



Western blot analysis of extracts (35ug) from mouse kidney by using anti-CELF6 monoclonal antibody (1:250).