

## Product datasheet for **TA811937**

### **BRUNOL6 (CELF6) Mouse Monoclonal Antibody [Clone ID: OTI2B8]**

#### **Product data:**

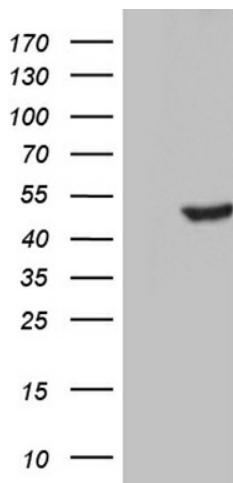
Product Type:	Primary Antibodies
Clone Name:	OTI2B8
Applications:	WB
Recommended Dilution:	WB 1:2000
Reactivity:	Human
Host:	Mouse
Isotype:	IgG1
Clonality:	Monoclonal
Immunogen:	Full length human recombinant protein of human CELF6 (NP_443072) produced in E.coli.
Formulation:	PBS (pH 7.3) containing 1% BSA, 50% glycerol and 0.02% sodium azide.
Concentration:	1 mg/ml
Purification:	Purified from mouse ascites fluids or tissue culture supernatant by affinity chromatography (protein A/G)
Conjugation:	Unconjugated
Storage:	Store at -20°C as received.
Stability:	Stable for 12 months from date of receipt.
Predicted Protein Size:	50.3 kDa
Gene Name:	CUGBP, Elav-like family member 6
Database Link:	<a href="#">NP_443072</a> <a href="#">Entrez Gene 60677 Human</a> <a href="#">Q96J87</a>
Background:	Members of the CELF/BRUNOL protein family contain two N-terminal RNA recognition motif (RRM) domains, one C-terminal RRM domain, and a divergent segment of 160-230 aa between the second and third RRM domains. Members of this protein family regulate pre-mRNA alternative splicing and may also be involved in mRNA editing, and translation. Multiple alternatively spliced transcript variants encoding different isoforms have been identified in this gene. [provided by RefSeq, Feb 2010]



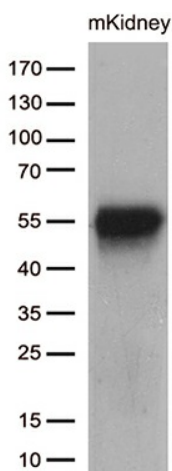
[View online »](#)

Synonyms: BRUNOL6

**Product images:**



HEK293T cells were transfected with the pCMV6-ENTRY control (Left lane) or pCMV6-ENTRY CELF6 ([RC205606], Right lane) cDNA for 48 hrs and lysed. Equivalent amounts of cell lysates (5 ug per lane) were separated by SDS-PAGE and immunoblotted with anti-CELF6. Positive lysates [LY409451] (100ug) and [LC409451] (20ug) can be purchased separately from OriGene.



Western blot analysis of extracts (35ug) from mouse kidney by using anti-CELF6 monoclonal antibody (1:250).