

## Product datasheet for **TA811934**

### CDK15 Mouse Monoclonal Antibody [Clone ID: OTI4H2]

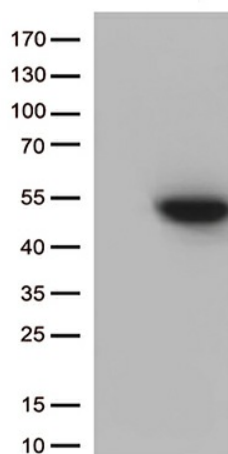
#### Product data:

Product Type:	Primary Antibodies
Clone Name:	OTI4H2
Applications:	WB
Recommended Dilution:	WB 1:500
Reactivity:	Human, Mouse, Rat
Host:	Mouse
Isotype:	IgG1
Clonality:	Monoclonal
Immunogen:	Human recombinant protein fragment corresponding to amino acids 293-378 of human CDK15 (NP_631897) produced in E.coli.
Formulation:	PBS (pH 7.3) containing 1% BSA, 50% glycerol and 0.02% sodium azide.
Concentration:	1 mg/ml
Purification:	Purified from mouse ascites fluids or tissue culture supernatant by affinity chromatography (protein A/G)
Conjugation:	Unconjugated
Storage:	Store at -20°C as received.
Stability:	Stable for 12 months from date of receipt.
Predicted Protein Size:	43.4 kDa
Gene Name:	cyclin-dependent kinase 15
Database Link:	<a href="#">NP_631897</a> <a href="#">Entrez Gene 271697 Mouse</a> <a href="#">Entrez Gene 301440 Rat</a> <a href="#">Entrez Gene 65061 Human</a> <a href="#">Q96Q40</a>
Synonyms:	ALS2CR7; PFTAIRES2; PFTK2
Protein Families:	Druggable Genome, Protein Kinase

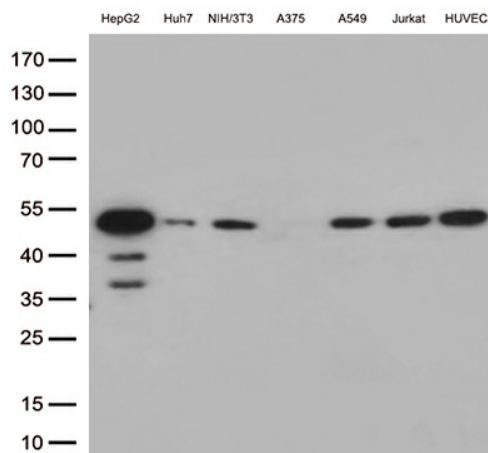


[View online »](#)

## Product images:



HEK293T cells were transfected with the pCMV6-ENTRY control (Cat# [PS100001], Left lane) or pCMV6-ENTRY CDK15 (Cat# [RC219623], Right lane) cDNA for 48 hrs and lysed. Equivalent amounts of cell lysates (5 ug per lane) were separated by SDS-PAGE and immunoblotted with anti-CDK15 (Cat# TA811934)(1:500).



Western blot analysis of extracts (35ug) from 7 cell lines lysates by using anti-CDK15 monoclonal antibody (1:500).