

## Product datasheet for **TA811921S**

### PSMD5 Mouse Monoclonal Antibody [Clone ID: OTI8B1]

#### Product data:

Product Type:	Primary Antibodies
Clone Name:	OTI8B1
Applications:	WB
Recommended Dilution:	WB 1:500~2000
Reactivity:	Human, Mouse, Rat
Host:	Mouse
Isotype:	IgG2b
Clonality:	Monoclonal
Immunogen:	Human recombinant protein fragment corresponding to amino acids 2-140 of human PSMD5 (NP_005038) produced in E.coli.
Formulation:	PBS (pH 7.3) containing 1% BSA, 50% glycerol and 0.02% sodium azide.
Concentration:	1 mg/ml
Purification:	Purified from mouse ascites fluids or tissue culture supernatant by affinity chromatography (protein A/G)
Conjugation:	Unconjugated
Storage:	Store at -20°C as received.
Stability:	Stable for 12 months from date of receipt.
Predicted Protein Size:	56 kDa
Gene Name:	proteasome 26S subunit, non-ATPase 5
Database Link:	<a href="#">NP_005038</a> <a href="#">Entrez Gene 66998 Mouse</a> <a href="#">Entrez Gene 296651 Rat</a> <a href="#">Entrez Gene 5711 Human</a> <a href="#">Q16401</a>



[View online »](#)

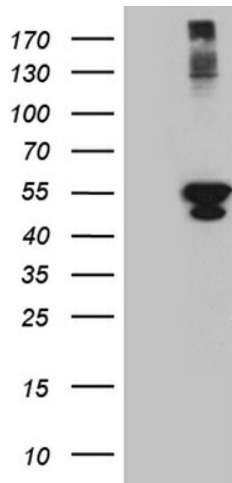
**Background:**

The 26S proteasome is a multicatalytic proteinase complex with a highly ordered structure composed of 2 complexes, a 20S core and a 19S regulator. The 20S core is composed of 4 rings of 28 non-identical subunits; 2 rings are composed of 7 alpha subunits and 2 rings are composed of 7 beta subunits. The 19S regulator is composed of a base, which contains 6 ATPase subunits and 2 non-ATPase subunits, and a lid, which contains up to 10 non-ATPase subunits. Proteasomes are distributed throughout eukaryotic cells at a high concentration and cleave peptides in an ATP/ubiquitin-dependent process in a non-lysosomal pathway. This gene encodes a non-ATPase subunit of the 19S regulator base that functions as a chaperone protein during 26S proteasome assembly. [provided by RefSeq, Jul 2012]

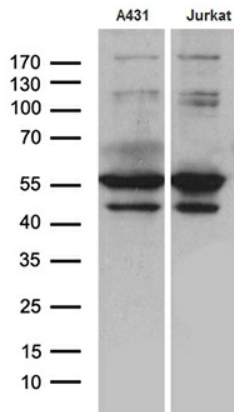
**Synonyms:**

S5B

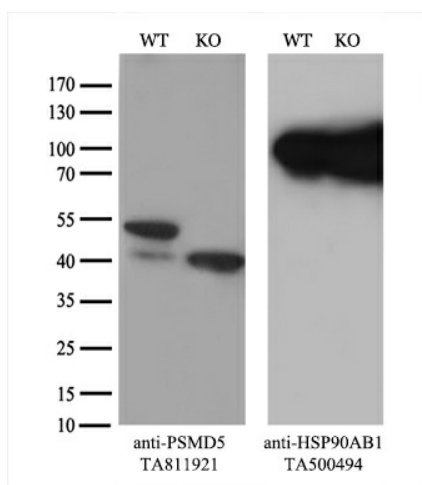
**Product images:**



HEK293T cells were transfected with the pCMV6-ENTRY control (Cat# [PS100001], Left lane) or pCMV6-ENTRY PSMD5 (Cat# [RC204913], Right lane) cDNA for 48 hrs and lysed. Equivalent amounts of cell lysates (5 ug per lane) were separated by SDS-PAGE and immunoblotted with anti-PSMD5(Cat# [TA811921]). Positive lysates [LY401563] (100ug) and [LC401563] (20ug) can be purchased separately from OriGene.



Western blot analysis of extracts (35ug) from 2 cell lines by using anti-PSMD5 monoclonal antibody (1:500).



Equivalent amounts of cell lysates (10 ug per lane) of wild-type HeLa cells (WT, Cat# LC810HELA) and PSMD5-Knockout HeLa cells (KO, Cat# [LC832826]) were separated by SDS-PAGE and immunoblotted with anti-PSMD5 monoclonal antibody [TA811921] (1:500). Then the blotted membrane was stripped and reprobed with anti-HSP90 antibody as a loading control.