

## Product datasheet for **TA811916AM**

### **KAL1 (ANOS1) Mouse Monoclonal Antibody (Biotin conjugated) [Clone ID: OTI4B8]**

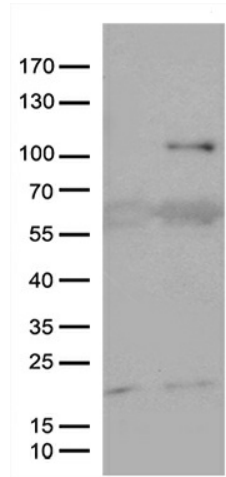
#### **Product data:**

<b>Product Type:</b>	Primary Antibodies
<b>Clone Name:</b>	OTI4B8
<b>Applications:</b>	WB
<b>Recommended Dilution:</b>	WB 1:500
<b>Reactivity:</b>	Human
<b>Host:</b>	Mouse
<b>Isotype:</b>	IgG2b
<b>Clonality:</b>	Monoclonal
<b>Immunogen:</b>	Human recombinant protein fragment corresponding to amino acids 129-373 of human KAL1(NP_000207) produced in E.coli.
<b>Formulation:</b>	PBS (pH 7.3) containing 1% BSA, 50% glycerol and 0.02% sodium azide.
<b>Concentration:</b>	0.5 mg/ml
<b>Purification:</b>	Purified from mouse ascites fluids or tissue culture supernatant by affinity chromatography (protein A/G)
<b>Conjugation:</b>	Biotin
<b>Storage:</b>	Store at -20°C as received.
<b>Stability:</b>	Stable for 12 months from date of receipt.
<b>Predicted Protein Size:</b>	76.11 kDa
<b>Gene Name:</b>	anosmin 1
<b>Database Link:</b>	<a href="#">NP_000207</a> <a href="#">Entrez Gene 3730 Human</a> <a href="#">P23352</a>
<b>Background:</b>	Mutations in this gene cause the X-linked Kallmann syndrome. The encoded protein is similar in sequence to proteins known to function in neural cell adhesion and axonal migration. In addition, this cell surface protein is N-glycosylated and may have anti-protease activity. [provided by RefSeq, Jul 2008]
<b>Synonyms:</b>	ADMLX; HH1; HHA; KAL; KAL1; KALIG-1; KMS; WFDC19

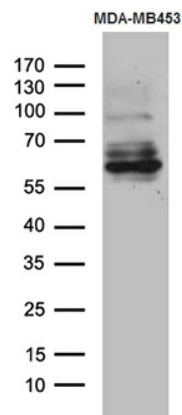


[View online »](#)

## Product images:



HEK293T cells were transfected with the pCMV6-ENTRY control (Cat# [PS100001], Left lane) or pCMV6-ENTRY KAL1 (Cat# [RC212305], Right lane) cDNA for 48 hrs and lysed. Equivalent amounts of cell lysates (5 ug per lane) were separated by SDS-PAGE and immunoblotted with anti-KAL1 (Cat# [TA811916]). Positive lysates [LY400084] (100ug) and [LC400084] (20ug) can be purchased separately from OriGene.



Western blot analysis of extracts (35ug) from MDA-MB453 cell line by using anti-KAL1 monoclonal antibody (1:500).