

Product datasheet for **TA811914**

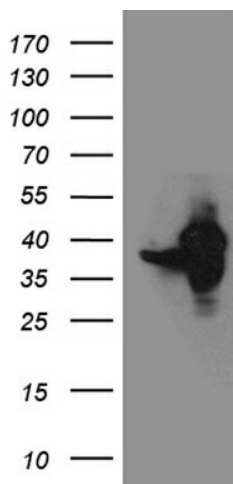
GIPC (GIPC1) Mouse Monoclonal Antibody [Clone ID: OTI4C11]

Product data:

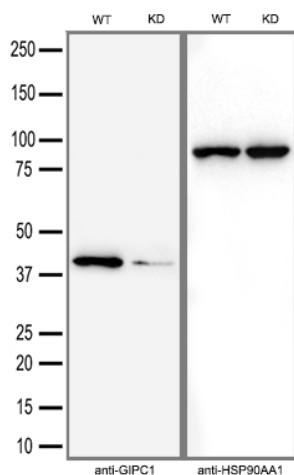
Product Type:	Primary Antibodies
Clone Name:	OTI4C11
Applications:	WB
Recommended Dilution:	WB 1:500~2000
Reactivity:	Human, Mouse, Rat
Host:	Mouse
Isotype:	IgG1
Clonality:	Monoclonal
Immunogen:	Full length human recombinant protein of human GIPC1 (NP_974199) produced in E.coli.
Formulation:	PBS (pH 7.3) containing 1% BSA, 50% glycerol and 0.02% sodium azide.
Concentration:	1 mg/ml
Purification:	Purified from mouse ascites fluids or tissue culture supernatant by affinity chromatography (protein A/G)
Conjugation:	Unconjugated
Storage:	Store at -20°C as received.
Stability:	Stable for 12 months from date of receipt.
Predicted Protein Size:	35.9 kDa
Gene Name:	GIPC PDZ domain containing family member 1
Database Link:	NP_974199 Entrez Gene 67903 Mouse Entrez Gene 83823 Rat Entrez Gene 10755 Human O14908
Background:	GIPC1 is a scaffolding protein that regulates cell surface receptor expression and trafficking (Lee et al., 2008 [PubMed 18775991]). [supplied by OMIM, Apr 2009]
Synonyms:	C19orf3; GIPC; GLUT1CBP; Hs.6454; IIP-1; NIP; OPDM2; RGS19IP1; SEMCAP; SYNECTIIN; SYNECTIN; TIP-2
Protein Families:	Druggable Genome



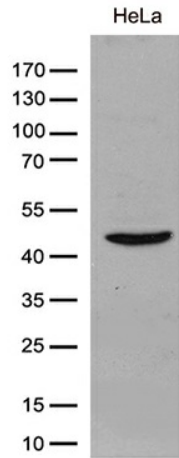
[View online »](#)

Product images:


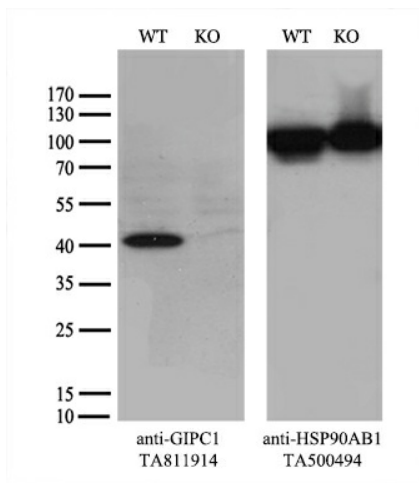
HEK293T cells were transfected with the pCMV6-ENTRY control (Cat# [PS100001], Left lane) or pCMV6-ENTRY GIPC1 (Cat# [RC201175], Right lane) cDNA for 48 hrs and lysed. Equivalent amounts of cell lysates (5 ug per lane) were separated by SDS-PAGE and immunoblotted with anti-GIPC1 (Cat# TA811914). Positive lysates [LY404363] (100ug) and [LC404363] (20ug) can be purchased separately from OriGene.



Equivalent amounts of cell lysates (30 ug per lane) of wild-type HT-1080 cells (WT) and GIPC1-Knockdown HT-1080 cells (KD) were separated by SDS-PAGE and immunoblotted with anti-GIPC1 monoclonal antibody TA811914 (1:5000). Then the blotted membrane was stripped and reprobed with anti-HSP90AA1 antibody as a loading control.



Western blot analysis of extracts (35ug) from cell lines and/or tissue lysates by using anti-GIPC1 monoclonal antibody (1:500).



Equivalent amounts of cell lysates (10 ug per lane) of wild-type 293T cells (WT, Cat# LC810293T) and GIPC1-Knockout 293T cells (KO, Cat# [LC811884]) were separated by SDS-PAGE and immunoblotted with anti-GIPC1 monoclonal antibody TA811914 (1:500). Then the blotted membrane was stripped and reprobed with anti-HSP90 antibody as a loading control.