

Product datasheet for **TA811897AM**

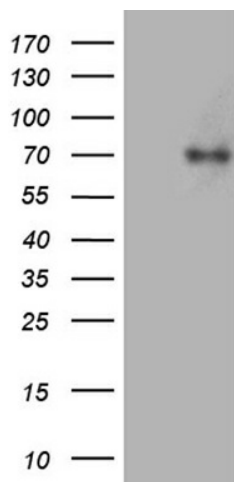
ACSL5 Mouse Monoclonal Antibody (Biotin conjugated) [Clone ID: OTI3A3]

Product data:

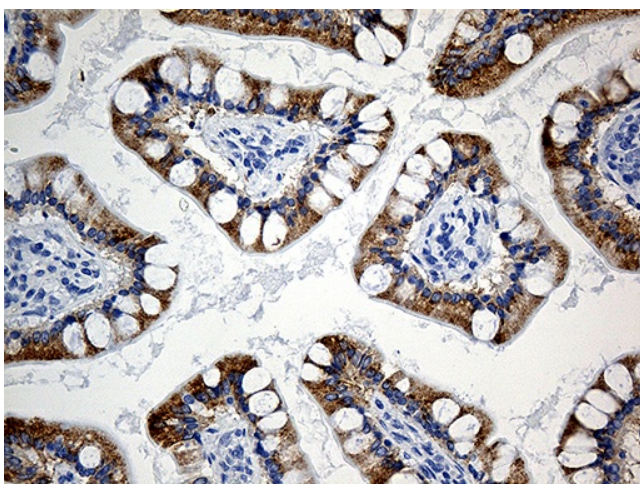
| | |
|-------------------------|--|
| Product Type: | Primary Antibodies |
| Clone Name: | OTI3A3 |
| Applications: | IHC, WB |
| Recommended Dilution: | WB 1:500, IHC 1:500 |
| Reactivity: | Human |
| Host: | Mouse |
| Isotype: | IgG1 |
| Clonality: | Monoclonal |
| Immunogen: | Human recombinant protein fragment corresponding to amino acids 104-620 of human ACSL5 (NP_976313) produced in E.coli. |
| Formulation: | PBS (pH 7.3) containing 1% BSA, 50% glycerol and 0.02% sodium azide. |
| Concentration: | 0.5 mg/ml |
| Purification: | Purified from mouse ascites fluids or tissue culture supernatant by affinity chromatography (protein A/G) |
| Conjugation: | Biotin |
| Storage: | Store at -20°C as received. |
| Stability: | Stable for 12 months from date of receipt. |
| Predicted Protein Size: | 75.8 kDa |
| Gene Name: | acyl-CoA synthetase long-chain family member 5 |
| Database Link: | NP_976313 Entrez Gene 51703 Human Q9ULC5 |
| Synonyms: | ACS2; ACS5; FACL5 |
| Protein Families: | Transmembrane |
| Protein Pathways: | Adipocytokine signaling pathway, Fatty acid metabolism, Metabolic pathways, PPAR signaling pathway |



[View online »](#)

Product images:

HEK293T cells were transfected with the pCMV6-ENTRY control (Cat# [PS100001], Left lane) or pCMV6-ENTRY ACSL5 (Cat# [RC213380], Right lane) cDNA for 48 hrs and lysed. Equivalent amounts of cell lysates (5 ug per lane) were separated by SDS-PAGE and immunoblotted with anti-ACSL5 (Cat# [TA811897]). Positive lysates [LY404321] (100ug) and [LC404321] (20ug) can be purchased separately from OriGene.



Immunohistochemical staining of paraffin-embedded Human colon tissue within the normal limits using anti-ACSL5 mouse monoclonal antibody. (Heat-induced epitope retrieval by 1mM EDTA in 10mM Tris buffer (pH8.5) at 120°C for 3min, [TA811897]) (1:500)