

## Product datasheet for **TA811880M**

### **UBE1C (UBA3) Mouse Monoclonal Antibody [Clone ID: OTI1B10]**

#### **Product data:**

Product Type:	Primary Antibodies
Clone Name:	OTI1B10
Applications:	WB
Recommended Dilution:	WB 1:500
Reactivity:	Human, Dog, Rat, Monkey, Mouse
Host:	Mouse
Isotype:	IgG1
Clonality:	Monoclonal
Immunogen:	Human recombinant protein fragment corresponding to amino acids 1-463 of human UBA3 (NP_003959) produced in E.coli.
Formulation:	PBS (pH 7.3) containing 1% BSA, 50% glycerol and 0.02% sodium azide.
Concentration:	1 mg/ml
Purification:	Purified from mouse ascites fluids or tissue culture supernatant by affinity chromatography (protein A/G)
Conjugation:	Unconjugated
Storage:	Store at -20°C as received.
Stability:	Stable for 12 months from date of receipt.
Predicted Protein Size:	51.7 kDa
Gene Name:	ubiquitin like modifier activating enzyme 3
Database Link:	<a href="#">NP_003959</a> <a href="#">Entrez Gene 22200 Mouse</a> <a href="#">Entrez Gene 117553 Rat</a> <a href="#">Entrez Gene 476560 Dog</a> <a href="#">Entrez Gene 696493 Monkey</a> <a href="#">Entrez Gene 9039 Human</a> <a href="#">Q8TBC4</a>



[View online »](#)

**Background:**

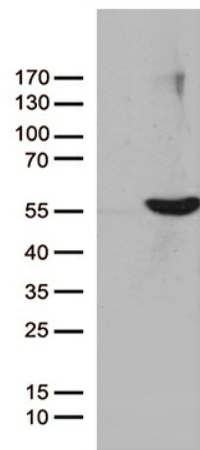
The modification of proteins with ubiquitin is an important cellular mechanism for targeting abnormal or short-lived proteins for degradation. Ubiquitination involves at least three classes of enzymes: ubiquitin-activating enzymes, or E1s, ubiquitin-conjugating enzymes, or E2s, and ubiquitin-protein ligases, or E3s. This gene encodes a member of the E1 ubiquitin-activating enzyme family. The encoded enzyme associates with AppBp1, an amyloid beta precursor protein binding protein, to form a heterodimer, and then the enzyme complex activates NEDD8, a ubiquitin-like protein, which regulates cell division, signaling and embryogenesis. Multiple alternatively spliced transcript variants encoding distinct isoforms have been found for this gene. [provided by RefSeq, Jul 2008]

**Synonyms:**

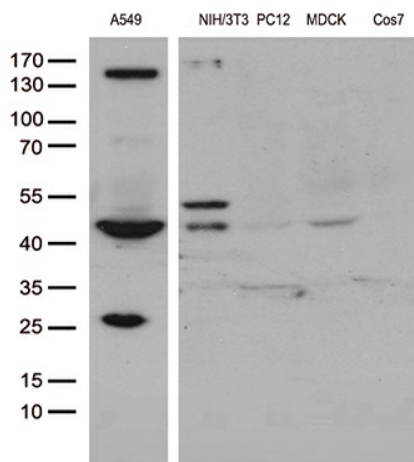
hUBA3; NAE2; UBE1C

**Protein Pathways:**

Ubiquitin mediated proteolysis

**Product images:**


HEK293T cells were transfected with the pCMV6-ENTRY control (Left lane) or pCMV6-ENTRY UBA3 ([RC204675], Right lane) cDNA for 48 hrs and lysed. Equivalent amounts of cell lysates (5 ug per lane) were separated by SDS-PAGE and immunoblotted with anti-UBA3 (1:500). Positive lysates [LY418315] (100ug) and [LC418315] (20ug) can be purchased separately from OriGene.



Western blot analysis of extracts (35ug) from different 5 cell lines by using anti-UBA3 monoclonal antibody (1:500).