

Product datasheet for **TA811878AM**

KLF5 Mouse Monoclonal Antibody (Biotin conjugated) [Clone ID: OT11E4]

Product data:

Product Type:	Primary Antibodies
Clone Name:	OT11E4
Applications:	WB
Recommended Dilution:	WB 1:500~2000
Reactivity:	Human, Mouse, Rat
Host:	Mouse
Isotype:	IgG2b
Clonality:	Monoclonal
Immunogen:	Human recombinant protein fragment corresponding to amino acids 1 – 457 of human KLF5 (NP_001721) produced in E.coli.
Formulation:	PBS (pH 7.3) containing 1% BSA, 50% glycerol and 0.02% sodium azide.
Concentration:	0.5 mg/ml
Purification:	Purified from mouse ascites fluids or tissue culture supernatant by affinity chromatography (protein A/G)
Conjugation:	Biotin
Storage:	Store at -20°C as received.
Stability:	Stable for 12 months from date of receipt.
Predicted Protein Size:	50.6 kDa
Gene Name:	Kruppel-like factor 5 (intestinal)
Database Link:	NP_001721 Entrez Gene 12224 Mouse Entrez Gene 84410 Rat Entrez Gene 688 Human Q13887



[View online »](#)

Background:

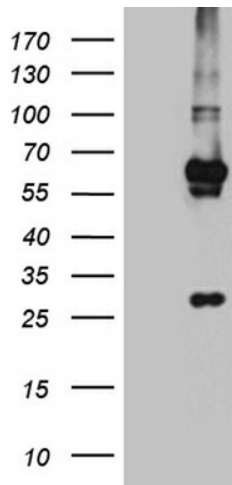
This gene encodes a member of the Kruppel-like factor subfamily of zinc finger proteins. The encoded protein is a transcriptional activator that binds directly to a specific recognition motif in the promoters of target genes. This protein acts downstream of multiple different signaling pathways and is regulated by post-translational modification. It may participate in both promoting and suppressing cell proliferation. Expression of this gene may be changed in a variety of different cancers and in cardiovascular disease. Alternative splicing results in multiple transcript variants. [provided by RefSeq, Nov 2013]

Synonyms:

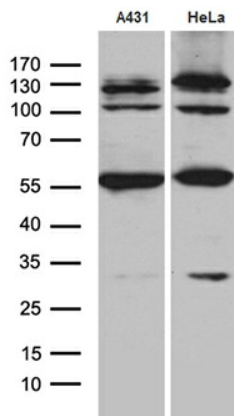
BTEB2; CKLF; IKLF

Protein Families:

Embryonic stem cells, ES Cell Differentiation/IPS, Induced pluripotent stem cells, Transcription Factors

Product images:


HEK293T cells were transfected with the pCMV6-ENTRY control (Left lane) or pCMV6-ENTRY KLF5 ([RC202438], Right lane) cDNA for 48 hrs and lysed. Equivalent amounts of cell lysates (5 ug per lane) were separated by SDS-PAGE and immunoblotted with anti-KLF5. Positive lysates [LY419775] (100ug) and [LC419775] (20ug) can be purchased separately from OriGene.



Western blot analysis of extracts (35ug) from 2 cell lines by using anti-KLF5 monoclonal antibody (1:500).