

## Product datasheet for **TA811876BM**

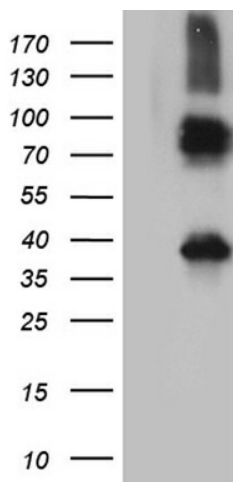
### ITM2A Mouse Monoclonal Antibody (HRP conjugated) [Clone ID: OTI10C11]

#### Product data:

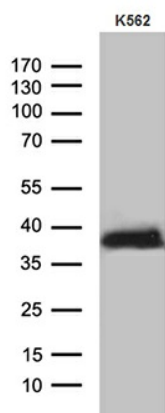
Product Type:	Primary Antibodies
Clone Name:	OTI10C11
Applications:	WB
Recommended Dilution:	WB 1:500~2000
Reactivity:	Human, Mouse, Rat
Host:	Mouse
Isotype:	IgG1
Clonality:	Monoclonal
Immunogen:	Full length human recombinant protein of human ITM2A (NP_004858) produced in E.coli.
Formulation:	PBS (pH 7.3) containing 1% BSA, 50% glycerol.
Concentration:	0.5 mg/ml
Purification:	Purified from mouse ascites fluids or tissue culture supernatant by affinity chromatography (protein A/G)
Conjugation:	HRP
Storage:	Store at -20°C as received.
Stability:	Stable for 12 months from date of receipt.
Predicted Protein Size:	29.6 kDa
Gene Name:	integral membrane protein 2A
Database Link:	<a href="#">NP_004858</a> <a href="#">Entrez Gene 9452 Human</a> <a href="#">O43736</a>
Background:	This gene encodes a type II membrane protein that belongs to the ITM2 family. Studies in mouse suggest that it may be involved in osteo- and chondrogenic differentiation. Alternatively spliced transcript variants encoding different isoforms have been found for this gene. [provided by RefSeq, Jan 2010]
Synonyms:	BRICD2A; E25A
Protein Families:	Transmembrane



[View online »](#)

**Product images:**

HEK293T cells were transfected with the pCMV6-ENTRY control (Left lane) or pCMV6-ENTRY ITM2A ([RC208057], Right lane) cDNA for 48 hrs and lysed. Equivalent amounts of cell lysates (5 ug per lane) were separated by SDS-PAGE and immunoblotted with anti-ITM2A. Positive lysates [LY401521] (100ug) and [LC401521] (20ug) can be purchased separately from OriGene.



Western blot analysis of extracts (35ug) from K562 cell line by using anti-ITM2A monoclonal antibody (1:500).