

## Product datasheet for **TA811870AM**

### Chromogranin C (SCG2) Mouse Monoclonal Antibody (Biotin conjugated) [Clone ID: OT18A3]

#### Product data:

Product Type:	Primary Antibodies
Clone Name:	OT18A3
Applications:	WB
Recommended Dilution:	WB 1:2000
Reactivity:	Human
Host:	Mouse
Isotype:	IgG1
Clonality:	Monoclonal
Immunogen:	Human recombinant protein fragment corresponding to amino acids 31-617 of human SCG2 (NP_003460) produced in E.coli.
Formulation:	PBS (pH 7.3) containing 1% BSA, 50% glycerol and 0.02% sodium azide.
Concentration:	0.5 mg/ml
Purification:	Purified from mouse ascites fluids or tissue culture supernatant by affinity chromatography (protein A/G)
Conjugation:	Biotin
Storage:	Store at -20°C as received.
Stability:	Stable for 12 months from date of receipt.
Predicted Protein Size:	70.8 kDa
Gene Name:	secretogranin II
Database Link:	<a href="#">NP_003460</a> <a href="#">Entrez Gene 7857 Human</a> <a href="#">P13521</a>
Background:	The protein encoded by this gene is a member of the chromogranin/secretogranin family of neuroendocrine secretory proteins. Studies in rodents suggest that the full-length protein, secretogranin II, is involved in the packaging or sorting of peptide hormones and neuropeptides into secretory vesicles. The full-length protein is cleaved to produce the active peptide secretoneurin, which exerts chemotaxic effects on specific cell types, and EM66, whose function is unknown. [provided by RefSeq, Jul 2008]

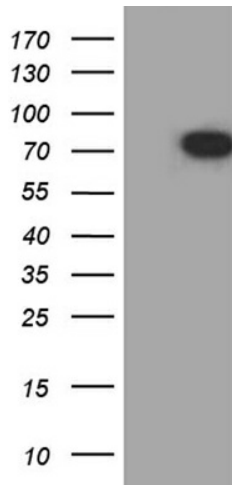


[View online »](#)

**Synonyms:** CHGC; EM66; SgII; SN

**Protein Families:** Secreted Protein, Transmembrane

**Product images:**



HEK293T cells were transfected with the pCMV6-ENTRY control (Cat# [PS100001], Left lane) or pCMV6-ENTRY SCG2 (Cat# [RC205382], Right lane) cDNA for 48 hrs and lysed. Equivalent amounts of cell lysates (5 ug per lane) were separated by SDS-PAGE and immunoblotted with anti-SCG2(Cat# [TA811870]). Positive lysates [LY418654] (100ug) and [LC418654] (20ug) can be purchased separately from OriGene.