

Product datasheet for **TA811864**

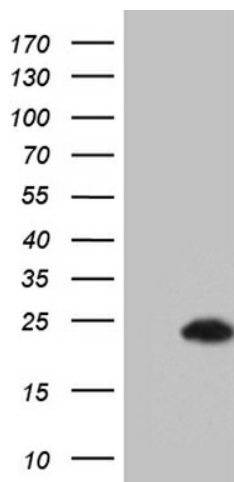
Achaete scute homolog 3 (ASCL3) Mouse Monoclonal Antibody [Clone ID: OTI1C5]

Product data:

Product Type:	Primary Antibodies
Clone Name:	OTI1C5
Applications:	WB
Recommended Dilution:	WB 1:2000
Reactivity:	Human
Host:	Mouse
Isotype:	IgG2a
Clonality:	Monoclonal
Immunogen:	Full length human recombinant protein of human Ascl3 (NP_065697) produced in HEK293T cell.
Formulation:	PBS (PH 7.3) containing 1% BSA, 50% glycerol and 0.02% sodium azide.
Concentration:	1 mg/ml
Purification:	Purified from mouse ascites fluids or tissue culture supernatant by affinity chromatography (protein A/G)
Conjugation:	Unconjugated
Storage:	Store at -20°C as received.
Stability:	Stable for 12 months from date of receipt.
Predicted Protein Size:	20.7 kDa
Gene Name:	achaete-scute family bHLH transcription factor 3
Database Link:	NP_065697 Entrez Gene 56676 Human Q9NQ33
Background:	Basic helix-loop-helix transcription factors, such as ASCL3, are essential for the determination of cell fate and the development and differentiation of numerous tissues (Jonsson et al., 2004 [PubMed 15475265]). [supplied by OMIM, Mar 2008]
Synonyms:	bHLHa42; HASH3; SGN1



[View online »](#)

Product images:

HEK293T cells were transfected with the pCMV6-ENTRY control (Cat# [PS100001], Left lane) or pCMV6-ENTRY ASCL3 (Cat# [RC220042], Right lane) cDNA for 48 hrs and lysed. Equivalent amounts of cell lysates (5 ug per lane) were separated by SDS-PAGE and immunoblotted with anti-ASCL3 (Cat# TA811864). Positive lysates [LY412408] (100ug) and [LC412408] (20ug) can be purchased separately from OriGene.