

Product datasheet for **TA811863AM**

ITM2A Mouse Monoclonal Antibody (Biotin conjugated) [Clone ID: OTI8F10]

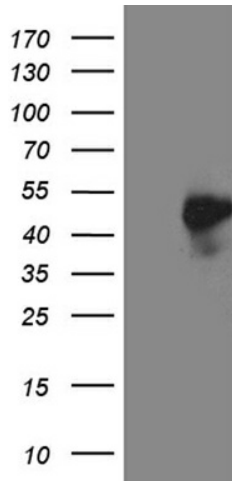
Product data:

Product Type:	Primary Antibodies
Clone Name:	OTI8F10
Applications:	IHC, WB
Recommended Dilution:	WB 1:500~2000, IHC 1:250
Reactivity:	Human, Mouse, Rat
Host:	Mouse
Isotype:	IgG1
Clonality:	Monoclonal
Immunogen:	Full length human recombinant protein of human ITM2A (NP_004858) produced in E.coli.
Formulation:	PBS (pH 7.3) containing 1% BSA, 50% glycerol and 0.02% sodium azide.
Concentration:	0.5 mg/ml
Purification:	Purified from mouse ascites fluids or tissue culture supernatant by affinity chromatography (protein A/G)
Conjugation:	Biotin
Storage:	Store at -20°C as received.
Stability:	Stable for 12 months from date of receipt.
Predicted Protein Size:	29.6 kDa
Gene Name:	integral membrane protein 2A
Database Link:	NP_004858 Entrez Gene 9452 Human O43736
Background:	This gene encodes a type II membrane protein that belongs to the ITM2 family. Studies in mouse suggest that it may be involved in osteo- and chondrogenic differentiation. Alternatively spliced transcript variants encoding different isoforms have been found for this gene. [provided by RefSeq, Jan 2010]
Synonyms:	BRICD2A; E25A
Protein Families:	Transmembrane

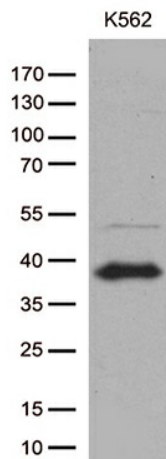


[View online »](#)

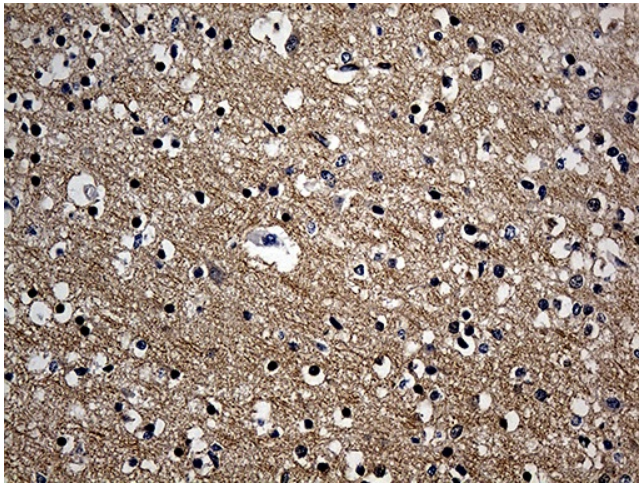
Product images:



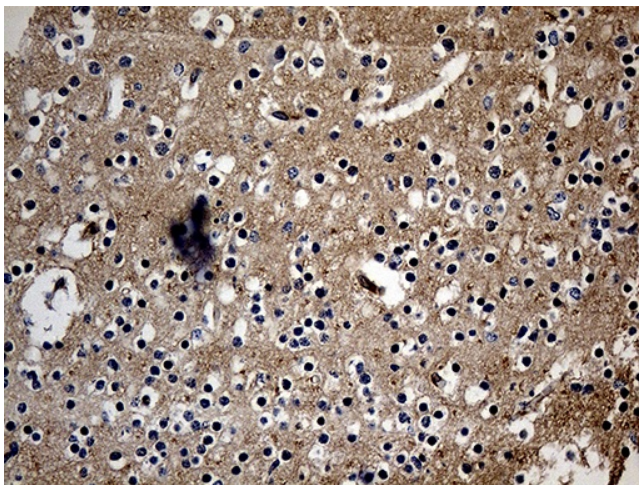
HEK293T cells were transfected with the pCMV6-ENTRY control (Cat# [PS100001], Left lane) or pCMV6-ENTRY ITM2A (Cat# [RC208057], Right lane) cDNA for 48 hrs and lysed. Equivalent amounts of cell lysates (5 ug per lane) were separated by SDS-PAGE and immunoblotted with anti-ITM2A (Cat# [TA811863]). Positive lysates [LY401521] (100ug) and [LC401521] (20ug) can be purchased separately from OriGene.



Western blot analysis of extracts (35ug) from cell lines and/or tissue lysates by using anti-ITM2A monoclonal antibody (1:500).



Immunohistochemical staining of paraffin-embedded Human adult brain tissue within the normal limits using anti-ITM2A mouse monoclonal antibody. (Heat-induced epitope retrieval by 1mM EDTA in 10mM Tris buffer (pH8.5) at 120°C for 3min, [TA811863]) (1:250)



Immunohistochemical staining of paraffin-embedded Human embryonic cerebellum within the normal limits using anti-ITM2A mouse monoclonal antibody. (Heat-induced epitope retrieval by 1mM EDTA in 10mM Tris buffer (pH8.5) at 120°C for 3min, [TA811863]) (1:250)