

## Product datasheet for **TA811858AM**

### MRC2 Mouse Monoclonal Antibody (Biotin conjugated) [Clone ID: OTI9G4]

#### Product data:

Product Type:	Primary Antibodies
Clone Name:	OTI9G4
Applications:	IHC, WB
Recommended Dilution:	WB 1:500~2000, IHC 1:5000
Reactivity:	Human, Mouse, Rat
Host:	Mouse
Isotype:	IgG2a
Clonality:	Monoclonal
Immunogen:	Full length human recombinant protein of human MRC2 (NP_006030) produced in HEK293T cell.
Formulation:	PBS (pH 7.3) containing 1% BSA, 50% glycerol and 0.02% sodium azide.
Concentration:	0.5 mg/ml
Purification:	Purified from mouse ascites fluids or tissue culture supernatant by affinity chromatography (protein A/G)
Conjugation:	Biotin
Storage:	Store at -20°C as received.
Stability:	Stable for 12 months from date of receipt.
Predicted Protein Size:	166.5 kDa
Gene Name:	mannose receptor C type 2
Database Link:	<a href="#">NP_006030</a> <a href="#">Entrez Gene 17534 Mouse</a> <a href="#">Entrez Gene 498011 Rat</a> <a href="#">Entrez Gene 9902 Human</a> <a href="#">Q9UBG0</a>
Background:	This gene encodes a member of the mannose receptor family of proteins that contain a fibronectin type II domain and multiple C-type lectin-like domains. The encoded protein plays a role in extracellular matrix remodeling by mediating the internalization and lysosomal degradation of collagen ligands. Expression of this gene may play a role in the tumorigenesis and metastasis of several malignancies including breast cancer, gliomas and metastatic bone disease. [provided by RefSeq, Feb 2012]

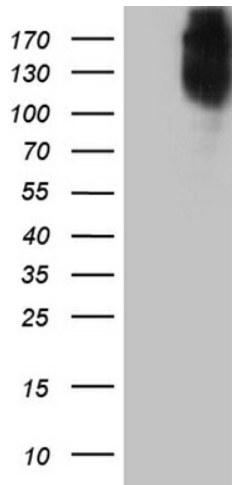


[View online »](#)

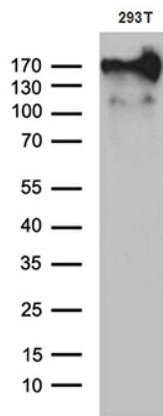
**Synonyms:** CD280; CLEC13E; ENDO180; UPARAP

**Protein Families:** Druggable Genome, Transmembrane

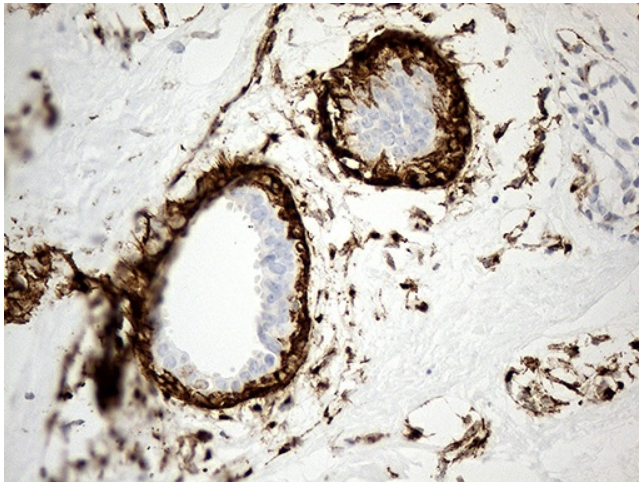
**Product images:**



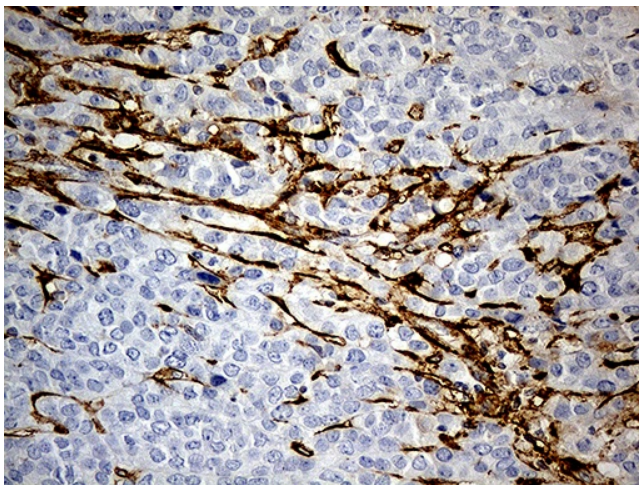
HEK293T cells were transfected with the pCMV6-ENTRY control (Cat# [PS100001], Left lane) or pCMV6-ENTRY MRC2 (Cat# [RC221360], Right lane) cDNA for 48 hrs and lysed. Equivalent amounts of cell lysates (5 ug per lane) were separated by SDS-PAGE and immunoblotted with anti-MRC2(Cat# [TA811858]). Positive lysates [LY416912] (100ug) and [LC416912] (20ug) can be purchased separately from OriGene.



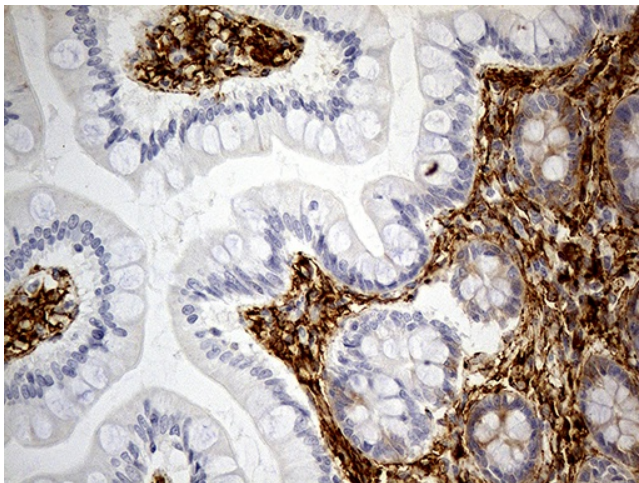
Western blot analysis of extracts (35ug) from 293T cell line by using anti-MRC2 monoclonal antibody (1:500).



Immunohistochemical staining of paraffin-embedded Human breast tissue within the normal limits using anti-MRC2 mouse monoclonal antibody. (Heat-induced epitope retrieval by 1mM EDTA in 10mM Tris buffer (pH8.5) at 120°C for 3min, [TA811858]) (1:5000)

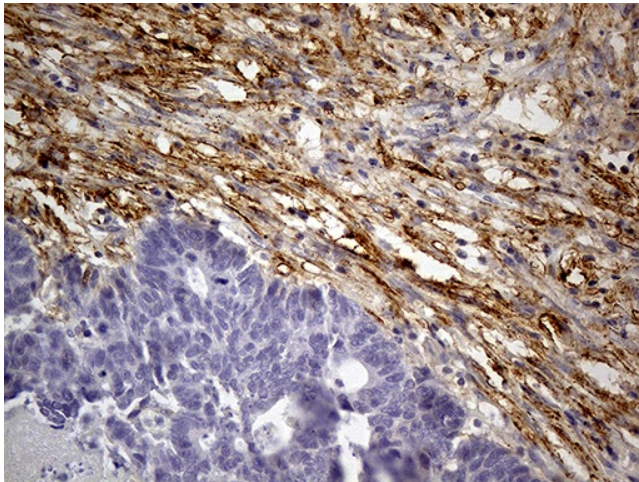


Immunohistochemical staining of paraffin-embedded Adenocarcinoma of Human breast tissue using anti-MRC2 mouse monoclonal antibody. (Heat-induced epitope retrieval by 1mM EDTA in 10mM Tris buffer (pH8.5) at 120°C for 3min, [TA811858]) (1:5000)

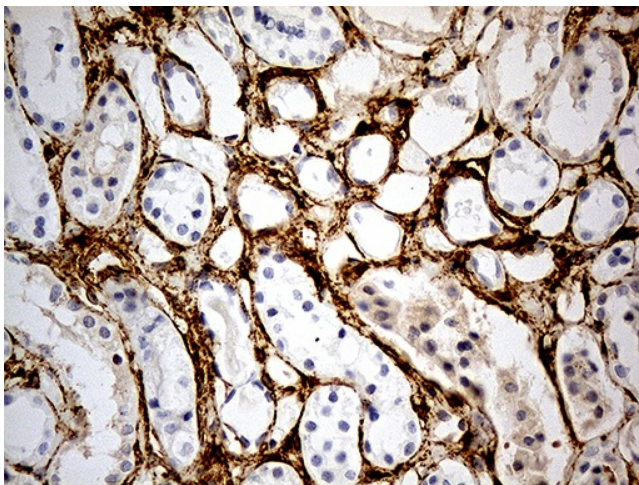


Immunohistochemical staining of paraffin-embedded Human colon tissue within the normal limits using anti-MRC2 mouse monoclonal antibody. (Heat-induced epitope retrieval by 1mM EDTA in 10mM Tris buffer (pH8.5) at 120°C for 3min, [TA811858]) (1:5000)

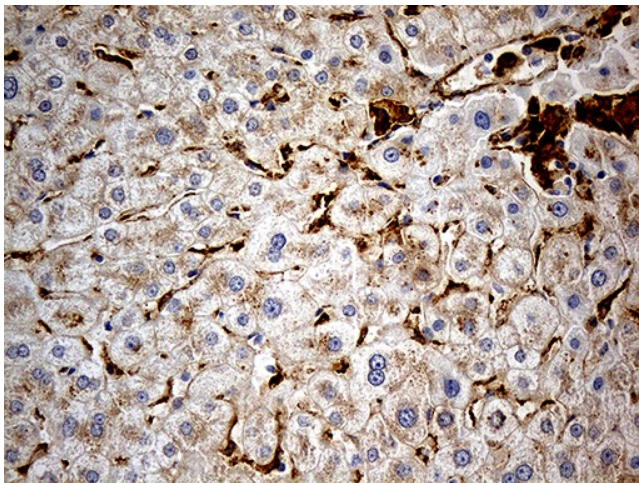




Immunohistochemical staining of paraffin-embedded Adenocarcinoma of Human colon tissue using anti-MRC2 mouse monoclonal antibody. (Heat-induced epitope retrieval by 1mM EDTA in 10mM Tris buffer (pH8.5) at 120°C for 3min, [TA811858]) (1:5000)

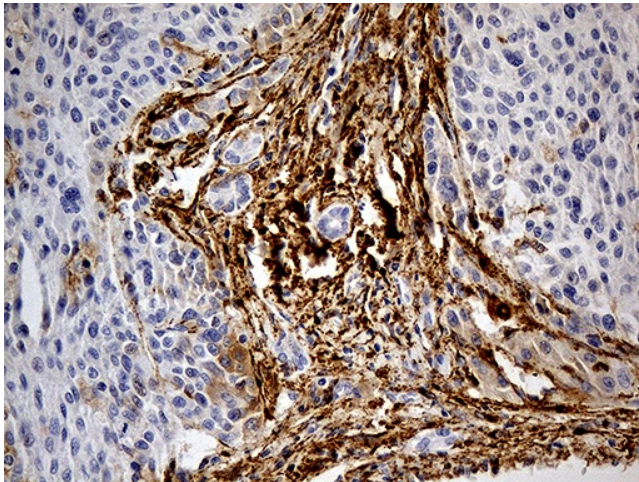


Immunohistochemical staining of paraffin-embedded Human Kidney tissue within the normal limits using anti-MRC2 mouse monoclonal antibody. (Heat-induced epitope retrieval by 1mM EDTA in 10mM Tris buffer (pH8.5) at 120°C for 3min, [TA811858]) (1:5000)

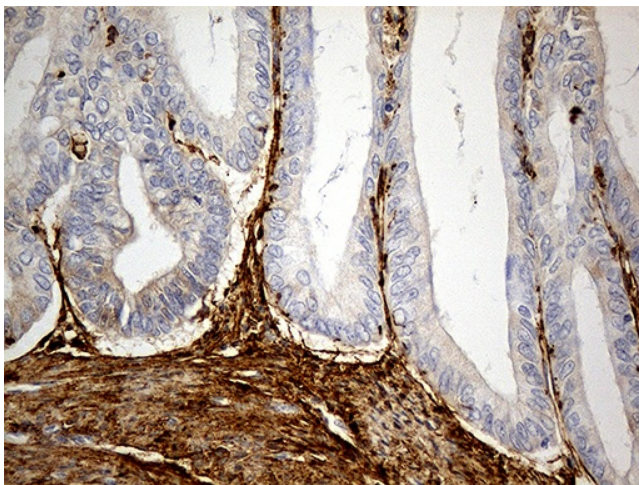


Immunohistochemical staining of paraffin-embedded Human liver tissue within the normal limits using anti-MRC2 mouse monoclonal antibody. (Heat-induced epitope retrieval by 1mM EDTA in 10mM Tris buffer (pH8.5) at 120°C for 3min, [TA811858]) (1:5000)

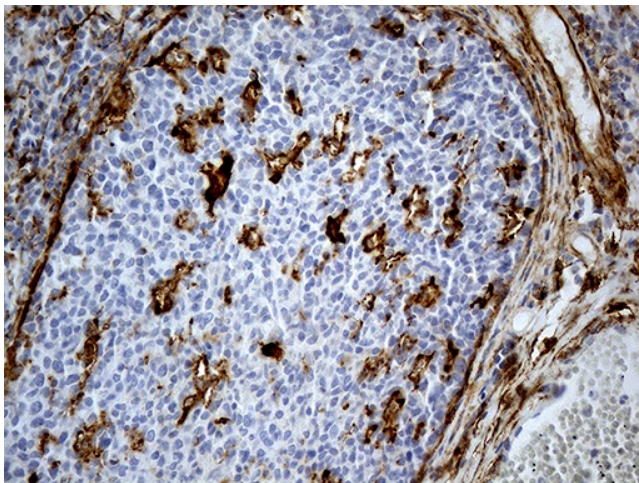




Immunohistochemical staining of paraffin-embedded Carcinoma of Human liver tissue using anti-MRC2 mouse monoclonal antibody. (Heat-induced epitope retrieval by 1mM EDTA in 10mM Tris buffer (pH8.5) at 120°C for 3min, [TA811858]) (1:5000)



Immunohistochemical staining of paraffin-embedded Adenocarcinoma of Human endometrium tissue using anti-MRC2 mouse monoclonal antibody. (Heat-induced epitope retrieval by 1mM EDTA in 10mM Tris buffer (pH8.5) at 120°C for 3min, [TA811858]) (1:5000)



Immunohistochemical staining of paraffin-embedded Human tonsil within the normal limits using anti-MRC2 mouse monoclonal antibody. (Heat-induced epitope retrieval by 1mM EDTA in 10mM Tris buffer (pH8.5) at 120°C for 3min, [TA811858]) (1:5000)