

Product datasheet for **TA811857**

GRK1 Mouse Monoclonal Antibody [Clone ID: OTI4G8]

Product data:

Product Type:	Primary Antibodies
Clone Name:	OTI4G8
Applications:	WB
Recommended Dilution:	WB 1:2000
Reactivity:	Human, Mouse, Rat
Host:	Mouse
Isotype:	IgG2b
Clonality:	Monoclonal
Immunogen:	Full length human recombinant protein of human GRK1 (NP_002920) produced in HEK293T cell.
Formulation:	PBS (pH 7.3) containing 1% BSA, 50% glycerol and 0.02% sodium azide.
Concentration:	1 mg/ml
Purification:	Purified from mouse ascites fluids or tissue culture supernatant by affinity chromatography (protein A/G)
Conjugation:	Unconjugated
Storage:	Store at -20°C as received.
Stability:	Stable for 12 months from date of receipt.
Predicted Protein Size:	63.3 kDa
Gene Name:	G protein-coupled receptor kinase 1
Database Link:	NP_002920 Entrez Gene 24013 Mouse Entrez Gene 81760 Rat Entrez Gene 6011 Human Q15835
Background:	This gene encodes a member of the guanine nucleotide-binding protein (G protein)-coupled receptor kinase subfamily of the Ser/Thr protein kinase family. The protein phosphorylates rhodopsin and initiates its deactivation. Defects in GRK1 are known to cause Oguchi disease 2 (also known as stationary night blindness Oguchi type-2). [provided by RefSeq, Jul 2008]
Synonyms:	GPRK1; RHOK; RK

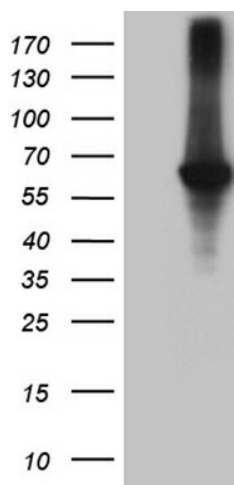


[View online »](#)

Protein Families: Druggable Genome, Protein Kinase

Protein Pathways: Chemokine signaling pathway, Endocytosis

Product images:



HEK293T cells were transfected with the pCMV6-ENTRY control (Cat# [PS100001], Left lane) or pCMV6-ENTRY GRK1 (Cat# [RC214569], Right lane) cDNA for 48 hrs and lysed. Equivalent amounts of cell lysates (5 ug per lane) were separated by SDS-PAGE and immunoblotted with anti-GRK1 (Cat# TA811857). Positive lysates [LY419010] (100ug) and [LC419010] (20ug) can be purchased separately from OriGene.