

Product datasheet for **TA811854BM**

GRK1 Mouse Monoclonal Antibody (HRP conjugated) [Clone ID: OTI1E11]

Product data:

| | |
|-------------------------|--|
| Product Type: | Primary Antibodies |
| Clone Name: | OTI1E11 |
| Applications: | WB |
| Recommended Dilution: | WB 1:2000 |
| Reactivity: | Human, Mouse, Rat |
| Host: | Mouse |
| Isotype: | IgG1 |
| Clonality: | Monoclonal |
| Immunogen: | Full length human recombinant protein of human GRK1 (NP_002920) produced in HEK293T cell. |
| Formulation: | PBS (pH 7.3) containing 1% BSA, 50% glycerol. |
| Concentration: | 0.5 mg/ml |
| Purification: | Purified from mouse ascites fluids or tissue culture supernatant by affinity chromatography (protein A/G) |
| Conjugation: | HRP |
| Storage: | Store at -20°C as received. |
| Stability: | Stable for 12 months from date of receipt. |
| Predicted Protein Size: | 63.3 kDa |
| Gene Name: | G protein-coupled receptor kinase 1 |
| Database Link: | NP_002920 Entrez Gene 24013 Mouse Entrez Gene 81760 Rat Entrez Gene 6011 Human Q15835 |
| Background: | This gene encodes a member of the guanine nucleotide-binding protein (G protein)-coupled receptor kinase subfamily of the Ser/Thr protein kinase family. The protein phosphorylates rhodopsin and initiates its deactivation. Defects in GRK1 are known to cause Oguchi disease 2 (also known as stationary night blindness Oguchi type-2). [provided by RefSeq, Jul 2008] |
| Synonyms: | GPRK1; RHOK; RK |

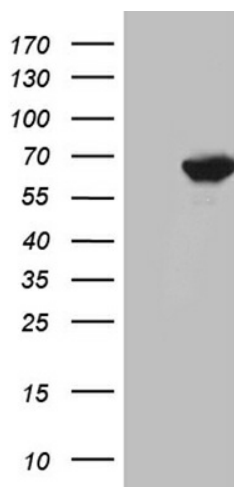


[View online »](#)

Protein Families: Druggable Genome, Protein Kinase

Protein Pathways: Chemokine signaling pathway, Endocytosis

Product images:



HEK293T cells were transfected with the pCMV6-ENTRY control (Left lane) or pCMV6-ENTRY GRK1 ([RC214569], Right lane) cDNA for 48 hrs and lysed. Equivalent amounts of cell lysates (5 ug per lane) were separated by SDS-PAGE and immunoblotted with anti-GRK1. Positive lysates [LY419010] (100ug) and [LC419010] (20ug) can be purchased separately from OriGene.