

## Product datasheet for **TA811846AM**

### MLH1 Mouse Monoclonal Antibody (Biotin conjugated) [Clone ID: OTI2A8]

#### Product data:

Product Type:	Primary Antibodies
Clone Name:	OTI2A8
Applications:	WB
Recommended Dilution:	WB 1:500
Reactivity:	Human, Mouse, Rat
Host:	Mouse
Isotype:	IgG2a
Clonality:	Monoclonal
Immunogen:	Human recombinant protein fragment corresponding to amino acids 1-298 of human MLH1 (NP_000240) produced in E.coli.
Formulation:	PBS (pH 7.3) containing 1% BSA, 50% glycerol and 0.02% sodium azide.
Concentration:	0.5 mg/ml
Purification:	Purified from mouse ascites fluids or tissue culture supernatant by affinity chromatography (protein A/G)
Conjugation:	Biotin
Storage:	Store at -20°C as received.
Stability:	Stable for 12 months from date of receipt.
Predicted Protein Size:	84.4 kDa
Gene Name:	mutL homolog 1
Database Link:	<a href="#">NP_000240</a> <a href="#">Entrez Gene 17350 Mouse</a> <a href="#">Entrez Gene 81685 Rat</a> <a href="#">Entrez Gene 4292 Human</a> <a href="#">P40692</a>
Background:	This gene was identified as a locus frequently mutated in hereditary nonpolyposis colon cancer (HNPCC). It is a human homolog of the E. coli DNA mismatch repair gene mutL, consistent with the characteristic alterations in microsatellite sequences (RER+phenotype) found in HNPCC. Alternative splicing results in multiple transcript variants encoding distinct isoforms. Additional transcript variants have been described, but their full-length natures have not been determined. [provided by RefSeq, Nov 2009]



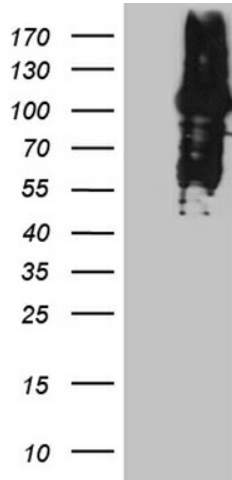
[View online »](#)

**Synonyms:** COCA2; FCC2; hMLH1; HNPCC; HNPCC2; MMRCS1

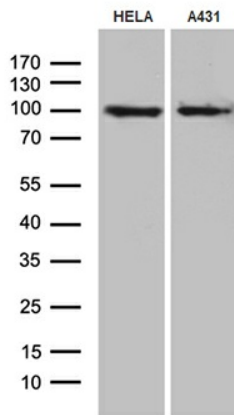
**Protein Families:** Druggable Genome

**Protein Pathways:** Colorectal cancer, Endometrial cancer, Mismatch repair, Pathways in cancer

**Product images:**



HEK293T cells were transfected with the pCMV6-ENTRY control (Left lane) or pCMV6-ENTRY MLH1 ([RC201607], Right lane) cDNA for 48 hrs and lysed. Equivalent amounts of cell lysates (5 ug per lane) were separated by SDS-PAGE and immunoblotted with anti-MLH1. Positive lysates [LY400096] (100ug) and [LC400096] (20ug) can be purchased separately from OriGene.



Western blot analysis of extracts (35ug) from 2 cell lines by using anti-MLH1 monoclonal antibody (1:500).