

Product datasheet for **TA811835AM**

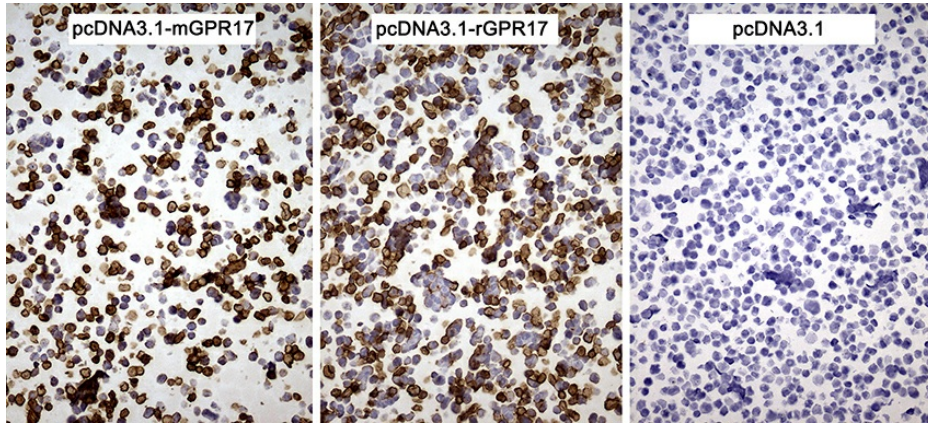
GPR17 Mouse Monoclonal Antibody (Biotin conjugated) [Clone ID: OTI18H2]

Product data:

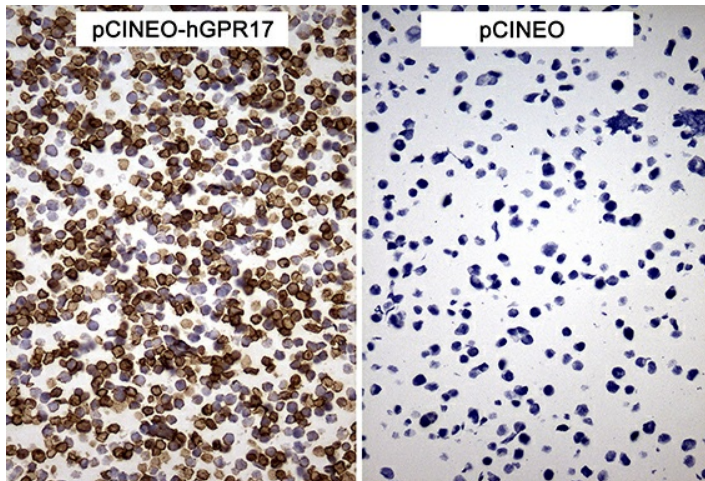
Product Type:	Primary Antibodies
Clone Name:	OTI18H2
Applications:	IHC
Recommended Dilution:	IHC 1:150
Reactivity:	Human, Mouse, Rat
Host:	Mouse
Isotype:	IgG1
Clonality:	Monoclonal
Immunogen:	Synthetic peptide (the amino acid sequence is considered to be commercially sensitive) within Human GPR17 (NP_005282). The exact sequence is proprietary.
Formulation:	PBS (pH 7.3) containing 1% BSA, 50% glycerol and 0.02% sodium azide.
Concentration:	0.5 mg/ml
Purification:	Purified from mouse ascites fluids or tissue culture supernatant by affinity chromatography (protein A/G)
Conjugation:	Biotin
Storage:	Store at -20°C as received.
Stability:	Stable for 12 months from date of receipt.
Predicted Protein Size:	37.86 kDa
Gene Name:	G protein-coupled receptor 17
Database Link:	NP_005282 Entrez Gene 574402 Mouse Entrez Gene 767613 Rat Entrez Gene 2840 Human Q13304
Synonyms:	DKFZp686M18273
Protein Families:	Druggable Genome, GPCR, Transmembrane



[View online »](#)

Product images:

Immunohistochemical staining of paraffin-embedded cell pellets of 293T cells transfected with pcDNA3.1-mGPR17, pcDNA3.1-rGPR17 or pcDNA3.1 plasmids using anti-GPR17 Mouse monoclonal antibody (Heat-induced epitope retrieval by Tris-EDTA buffer (pH8.0) at 120°C for 2.5 min) (1:150).



Immunohistochemical staining of paraffin-embedded cell pellets of 293T cells transfected with pCINEO-hGPR17 or pCINEO plasmids using anti-GPR17 Mouse monoclonal antibody (Heat-induced epitope retrieval by Tris-EDTA buffer (pH8.0) at 120°C for 2.5 min) (1:150).